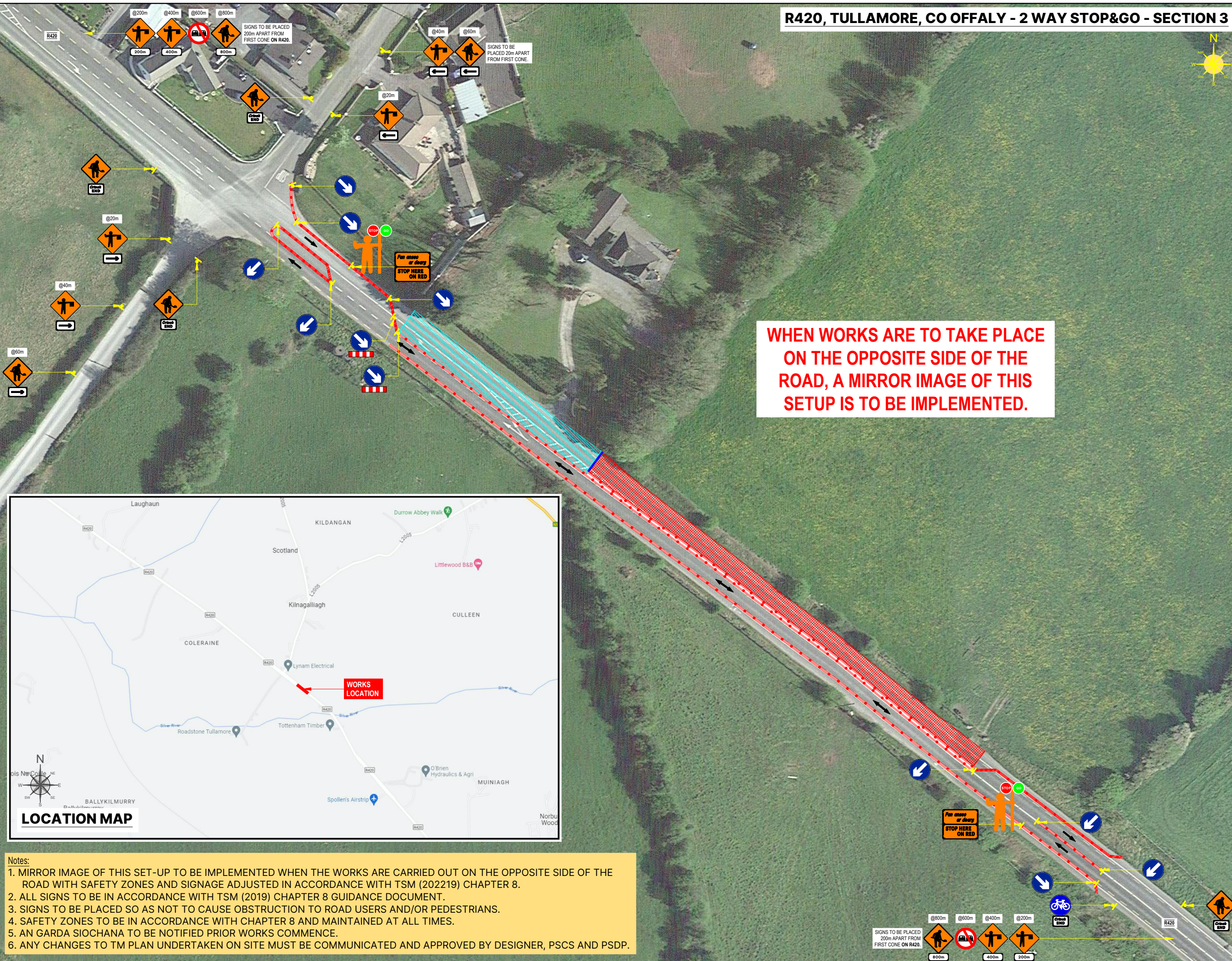
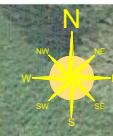
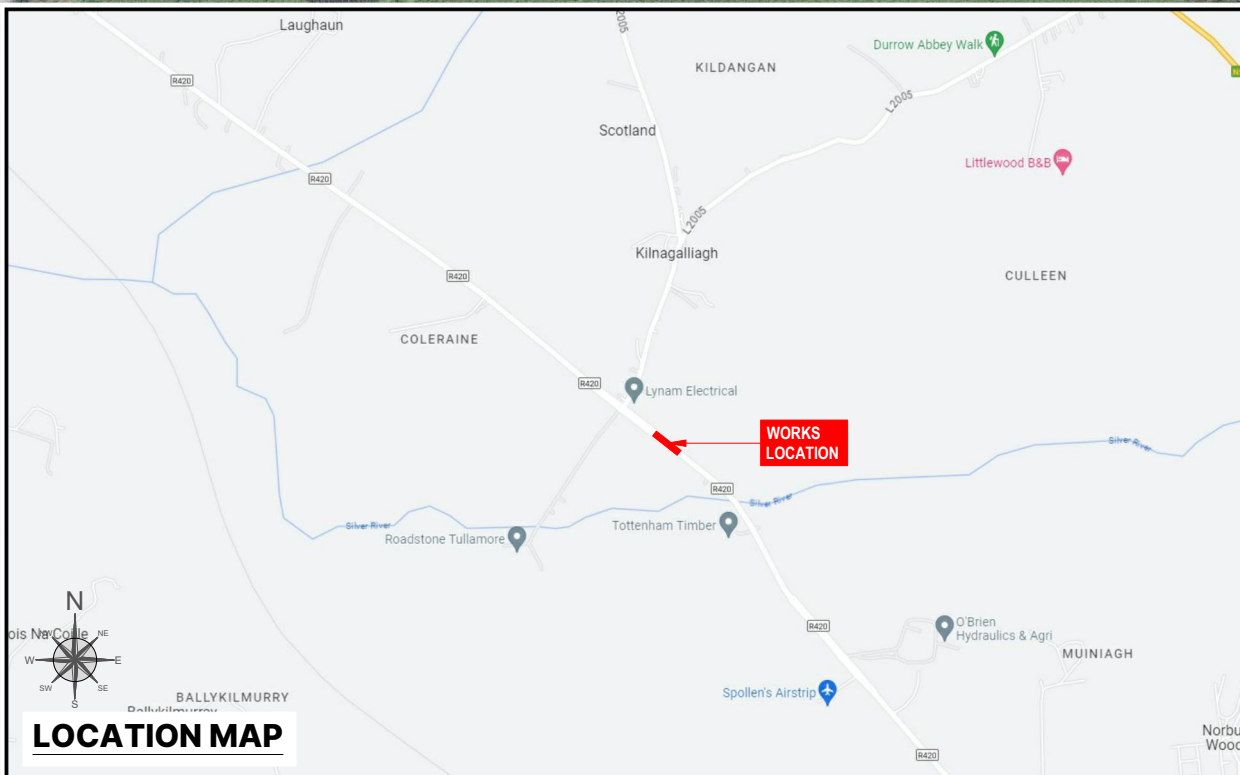


R420, TULLAMORE, CO OFFALY - 2 WAY STOP&GO - SECTION 3



WHEN WORKS ARE TO TAKE PLACE ON THE OPPOSITE SIDE OF THE ROAD, A MIRROR IMAGE OF THIS SETUP IS TO BE IMPLEMENTED.



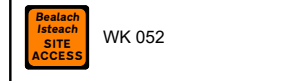
- Notes:**
1. MIRROR IMAGE OF THIS SET-UP TO BE IMPLEMENTED WHEN THE WORKS ARE CARRIED OUT ON THE OPPOSITE SIDE OF THE ROAD WITH SAFETY ZONES AND SIGNAGE ADJUSTED IN ACCORDANCE WITH TSM (202219) CHAPTER 8.
 2. ALL SIGNS TO BE IN ACCORDANCE WITH TSM (2019) CHAPTER 8 GUIDANCE DOCUMENT.
 3. SIGNS TO BE PLACED SO AS NOT TO CAUSE OBSTRUCTION TO ROAD USERS AND/OR PEDESTRIANS.
 4. SAFETY ZONES TO BE IN ACCORDANCE WITH CHAPTER 8 AND MAINTAINED AT ALL TIMES.
 5. AN GARDA SIOCHANA TO BE NOTIFIED PRIOR WORKS COMMENCE.
 6. ANY CHANGES TO TM PLAN UNDERTAKEN ON SITE MUST BE COMMUNICATED AND APPROVED BY DESIGNER, PSCS AND PSDP.

DESIGN PARAMETERS

Road Level	- 2(ii)
Roadworks Type	- B
Speed Limit	- 100km/h
Sign Visibility	- 120m
Number of Signs	- 3
Cumulative Distance	- 600m
Distance between: advance signs (m)	- 200m
Taper at Lane	- 1 in 60
Taper at HS	- 1 in 30
Max. Cone Spacing: At Tapers	- 3m
Longitudinal	- 12m
Cone Height	- 1000
Max. Lamp Spacing: At Tapers	- 6m
Longitudinal	- 24m
Safety Zones: Longitudinal	- 60m
Lateral	- 1.2m
Min. Lane Width	- 3m

LEGEND:

- SIGN SYMBOL
- WORKS AREA
- LONG SAFETY ZONE
- TRAFFIC CONE
- PEDESTRIAN BARRIERS
- TRAFFIC FLOW
- TRAFFIC FLOW



SIGN LOCATION PLACEMENT IS TO BE DECIDED BY THE ONSITE SUPERVISOR, AS TO DETERMINE THE LOCATION FOR THE BEST VISIBILITY AND HIGHEST AWARENESS



Road Traffic Management Design and Planning
 m: 085 141 4424
 e: mtdesign@live.ie
 a: Roscrea, Co. Tipperary

Client: Midlands EHS Solutions



Project Title:
COLRAINE LOW COST SAFETY SCHEME 2023

Drawing Title:
TRAFFIC MANAGEMENT PLAN AT R420, TULLAMORE, CO OFFALY

Design:	Checked:
TS	TS
Drawn:	Approved:
TP	TS
Drawing no.:	Project no.:
03	PN4500-15
Scale:	Revision:
A3 @ NTS	0
Date:	
18/10/2023	