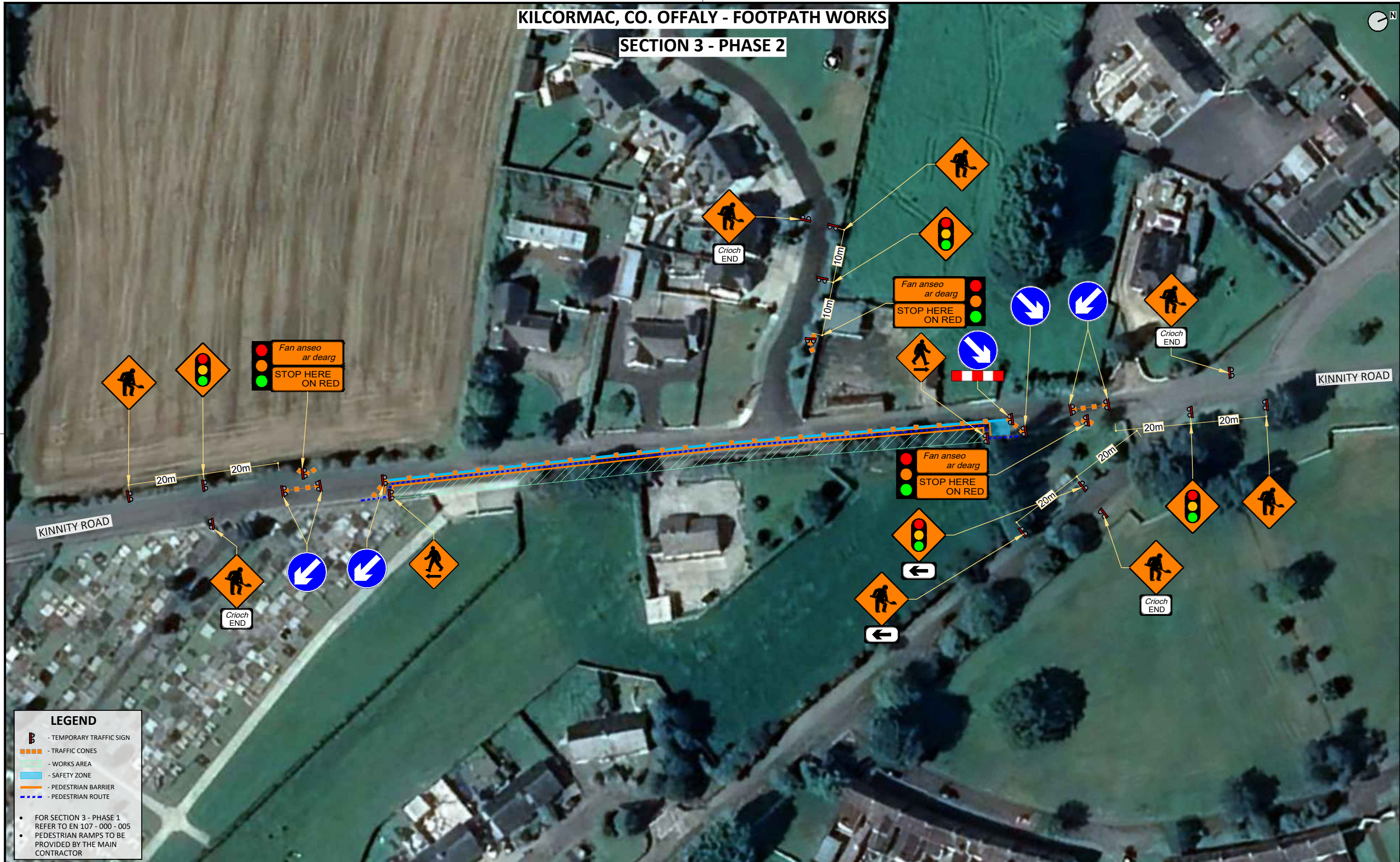


# KILCORMAC, CO. OFFALY - FOOTPATH WORKS

## SECTION 3 - PHASE 2



**LEGEND**

- TEMPORARY TRAFFIC SIGN
- TRAFFIC CONES
- WORKS AREA
- SAFETY ZONE
- PEDESTRIAN BARRIER
- PEDESTRIAN ROUTE

- FOR SECTION 3 - PHASE 1 REFER TO EN 107 - 000 - 005
- PEDESTRIAN RAMPS TO BE PROVIDED BY THE MAIN CONTRACTOR

**GENERAL NOTES**

- THIS DRAWING AND ANY DESIGN HEREON IS THE COPYRIGHT OF LP DESIGN AND MUST NOT BE REPRODUCED WITHOUT THEIR WRITTEN CONSENT.
- THIS TRAFFIC MANAGEMENT PLAN MAY ONLY BE IMPLEMENTED BY A TEMPORARY TRAFFIC OPERATIONS SUPERVISOR (TTOS) WHO MUST CARRY OUT A SITE RISK ASSESSMENT TO MODIFY (IF NECESSARY) THE MEASURES DESCRIBED TO SUIT ACTUAL SITE CONDITIONS BEFORE IMPLEMENTATION AND THE VALID CONSTRUCTION SKILLS REGULATION CARD.
- THE TTOS TO DETERMINE EXACT POSITION OF SIGNS CONSIDERING THE SITE SPECIFICS.
- THE PSCS MUST ADVISE THE PSDP AND ALL RELEVANT PARTIES OF ANY CHANGE TO THE TEMPORARY TRAFFIC MANAGEMENT PLAN.
- ALL WORKS ARE TO BE CARRIED OUT IN ACCORDANCE WITH LOCAL AUTHORITY REQUIREMENTS.
- MAINTENANCE CHECKS SHOULD BE CARRIED OUT AT REGULAR INTERVALS.
- TEMPORARY SIGNS SUPPORTS OR STANDS SHOULD BE DESIGNED IN ACCORDANCE WITH SPECIFICATION TS4.
- CONTRACTOR TO CARRY OUT A SITE RISK ASSESSMENT PRIOR TO THE INSTALLATION OF THE TRAFFIC MANAGEMENT PLAN TO ENSURE THAT CONDITIONS REFLECT THOSE CONSIDERED FOR DESIGN POST SUBMISSION.
- ALL SIGNS USED FOR THIS TRAFFIC MANAGEMENT PLAN MUST COMPLY WITH CHAPTER 8 OF TRAFFIC SIGNS MANUAL LATEST EDITION.
- SAFETY BARRIERS USED FOR THIS TMP MUST COMPLY WITH TII DN-REQ-03034-1 IS EN 1317-1 E) TEMPORARY SAFETY BARRIER.

DESIGN PARAMETER - LEVEL 1(III) - TYPE B (<12 hours)			
<b>ADVANCE WARNING SIGNAGE</b>		<b>LAMPS (unlit areas only)</b>	
SIGN SIZE (mm)	600	TAPER SPACING (m)	6
SIGN VISIBILITY (m)	50	LONGITUDINAL SPACING (m)	6
NUMBER OF SIGNS	2	<b>SAFETY ZONES</b>	
DISTANCE BETWEEN SIGNS (m)	20	LONGITUDINAL (m)	5
<b>TAPER</b>		LATERAL (m)	0.5
LANE TAPER RATE	1 IN 5	<b>LANES</b>	
<b>CONE</b>		LANE WIDTH (m) <sup>B</sup>	3 (2.5)
CONE HEIGHT (mm)	750	TWO-WAY ROADWAY WIDTH (m)	5
TAPER SPACING (m) <sup>A</sup>	3	<small>A. cone spacing is the maximum permitted, where geometry or any other site-specific reason dictates, the spacing shall be reduced accordingly. B. the optimum lane width for all classes of vehicles is 3.3m, this may be reduced to a minimum of 3m, below this, hgv's and buses must be marshalled past the works, the absolute minimum lane width, if only cars and light vehicles are present, is 2.5m</small>	
LONGITUDINAL SPACING (m) <sup>A</sup>	3		

REV	DESCRIPTION	DATE	REV BY
00		24/05/24	LG

**CLIENT:** TOWER CIVIL ENGINEERING  
**PROJECT:** KILCORMAC, CO. OFFALY  
**TITLE:** FOOTPATH WORKS - SECTION 3  
**DRAWN BY:** LG  
**CHECKED BY:** LG  
**PROJECT NUMBER:** EN 107 - 000 - 006 (R00)

**LP DESIGN**  
 TULLYLOUGHERNY, BROOMFIELD  
 A75 F584  
 CO. MONAGHAN  
 TEL: 089 952 9768  
 info@lpdesign.ie / www.lpdesign.ie

**TMC**  
 Traffic Management Crew

**LP design**  
 COPYRIGHT © 2024