

R420 Coleraine Loughaun

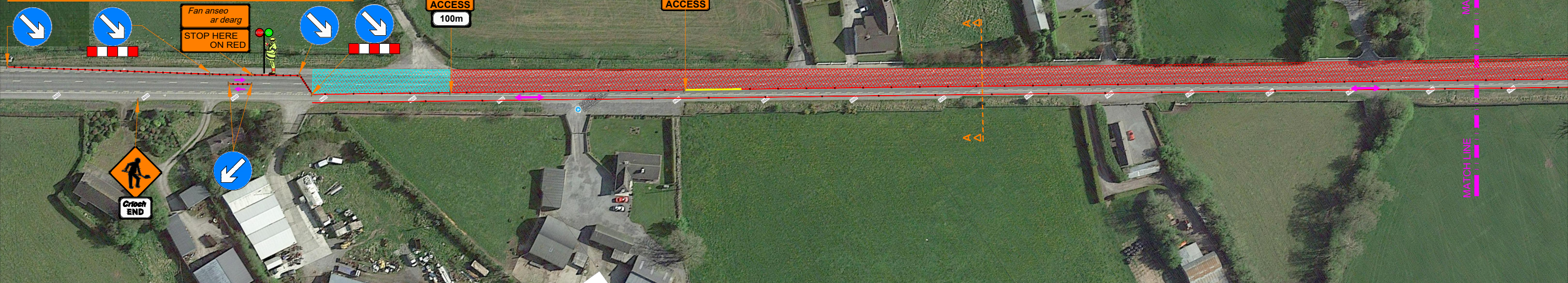
Stop & Go System with convoy - Phase 1A

1 km **600m**

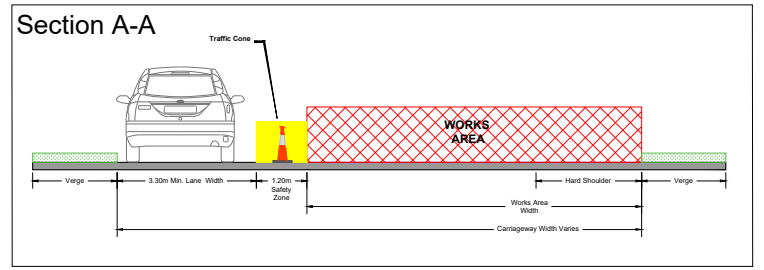
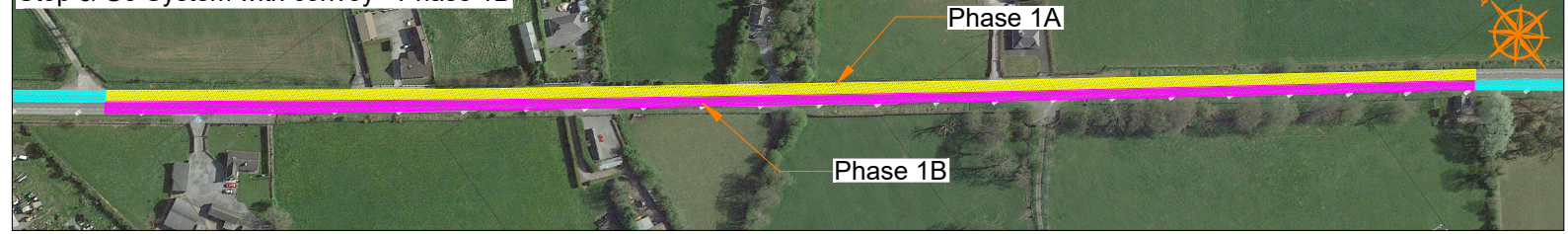
SIGNS TO BE PLACED @200m APART

Córas Chonbhua sa tSiúl
CONVOY SYSTEM IN OPERATION

Córas Chonbhua sa tSiúl
CONVOY SYSTEM IN OPERATION



Stop & Go System with convoy - Phase 1B



600m **1 km**

SIGNS TO BE PLACED @200m APART

Córas Chonbhua sa tSiúl
CONVOY SYSTEM IN OPERATION

Córas Chonbhua sa tSiúl
CONVOY SYSTEM IN OPERATION

ROAD CONTROL

Copyright Notes:
This drawing is the property of Road Control Services Ltd. The design information contained herein is strictly confidential. This document is not to be used, reproduced, disclosed or circulated in whole or in part without prior written consent.

CLIENT

Kilsaran
ideas taking shape

DESIGN PARAMETERS	
Advance Warning Signage	
Sign size	750mm
Sign Visibility	120m
Number of Signs	3
Cumulative Distance	600m
Distance between Advance Warning Signs	200m
Taper	
Lane Taper Rate	45° / 1 in 60
Hard Shoulder Taper Rate	1 in 30

Speed Limit		Road Classification	2(ii) Type B <12hours
Cones		Cone Height	1.000mm
		Taper Spacing	3m
		Longitudinal Spacing	12m
Safety Zones		Longitudinal	60m
		Lateral	1.2m
Lanes		Lane Width	3.0m

LEGEND

- Works Area
- Safety Zone
- Traffic sign
- Traffic cones
- Traffic Flow

GENERAL NOTES

- All information contained in this drawing (including digital data) should be checked and verified prior to any stage of construction;
- All works are to be carried out in accordance with local authority requirements and are to be included in the site-specific safety & health plan;
- Site inspections and maintenance of the traffic management layout is to be agreed with local authority to ensure the safety and integrity of the design;
- Contractor to carry out a site risk assessment prior to the installation of any traffic management plan to ensure that conditions reflect those considered for design post submission;
- Contractor shall be responsible for the provision of ramp access at any change in road surface level where traffic runs on a temporary surface, and for pedestrian/cycle ramps where footpath/cycle-ways have a level discontinuity as per result of the works.

Rev	Date	Details	Drn	Chk	App	Drn	BC
							SD
							DH
							28-08-2024
							NTS @A3
							CONSTRUCTION

Project	R420 Coleraine Loughaun
Title	TEMPORARY TRAFFIC MANAGEMENT PLAN Phase 1
Drawing No	C24002_24_001
Rev	0