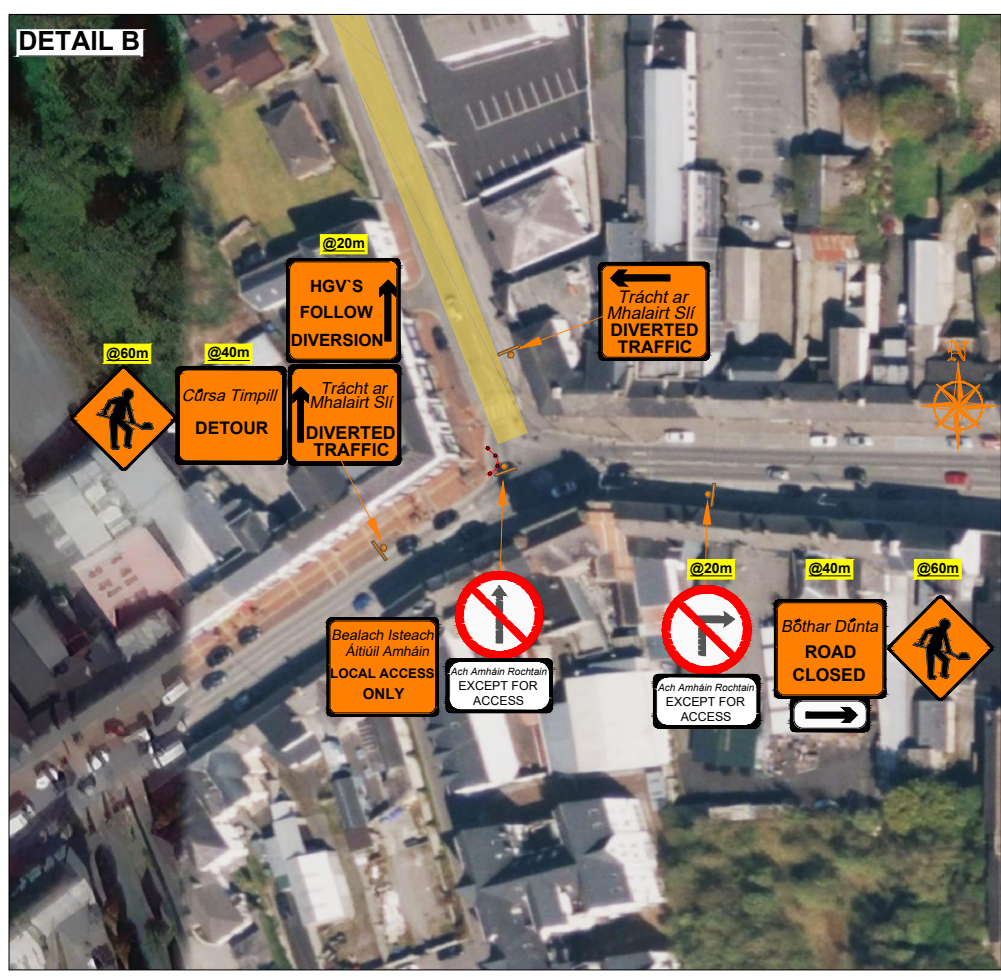
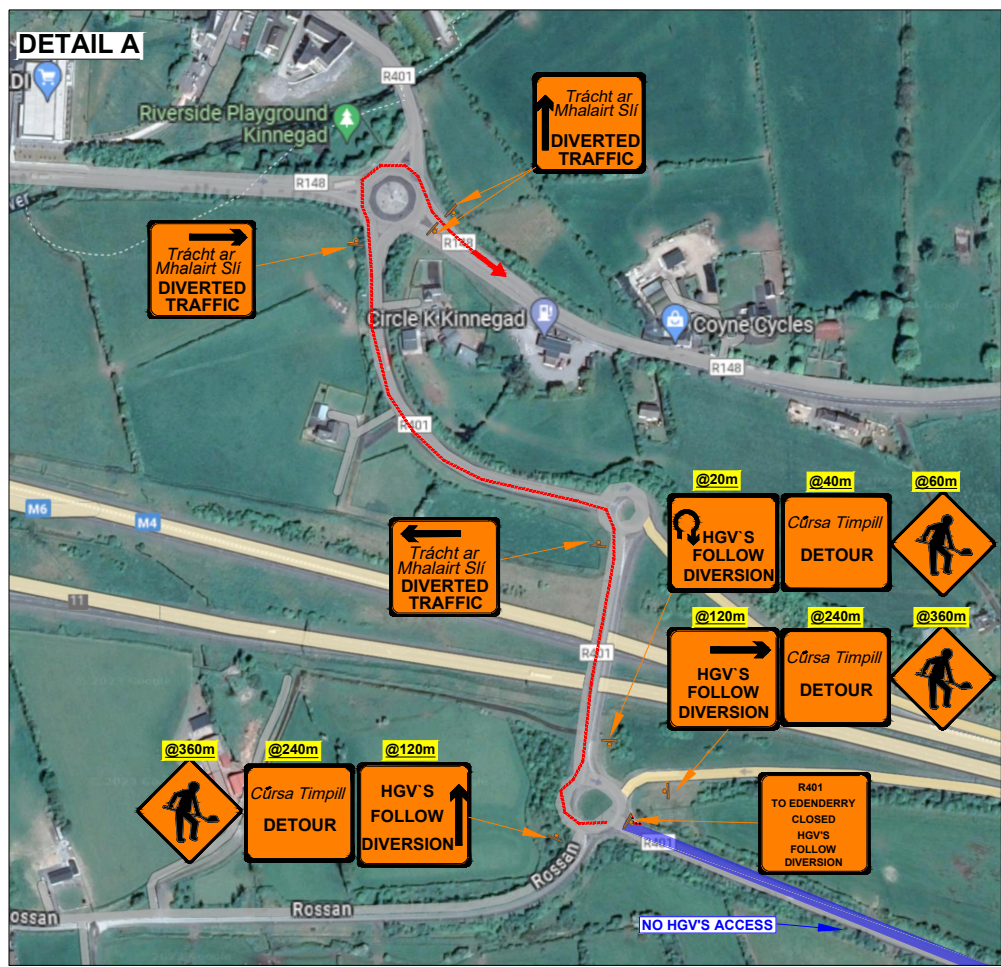
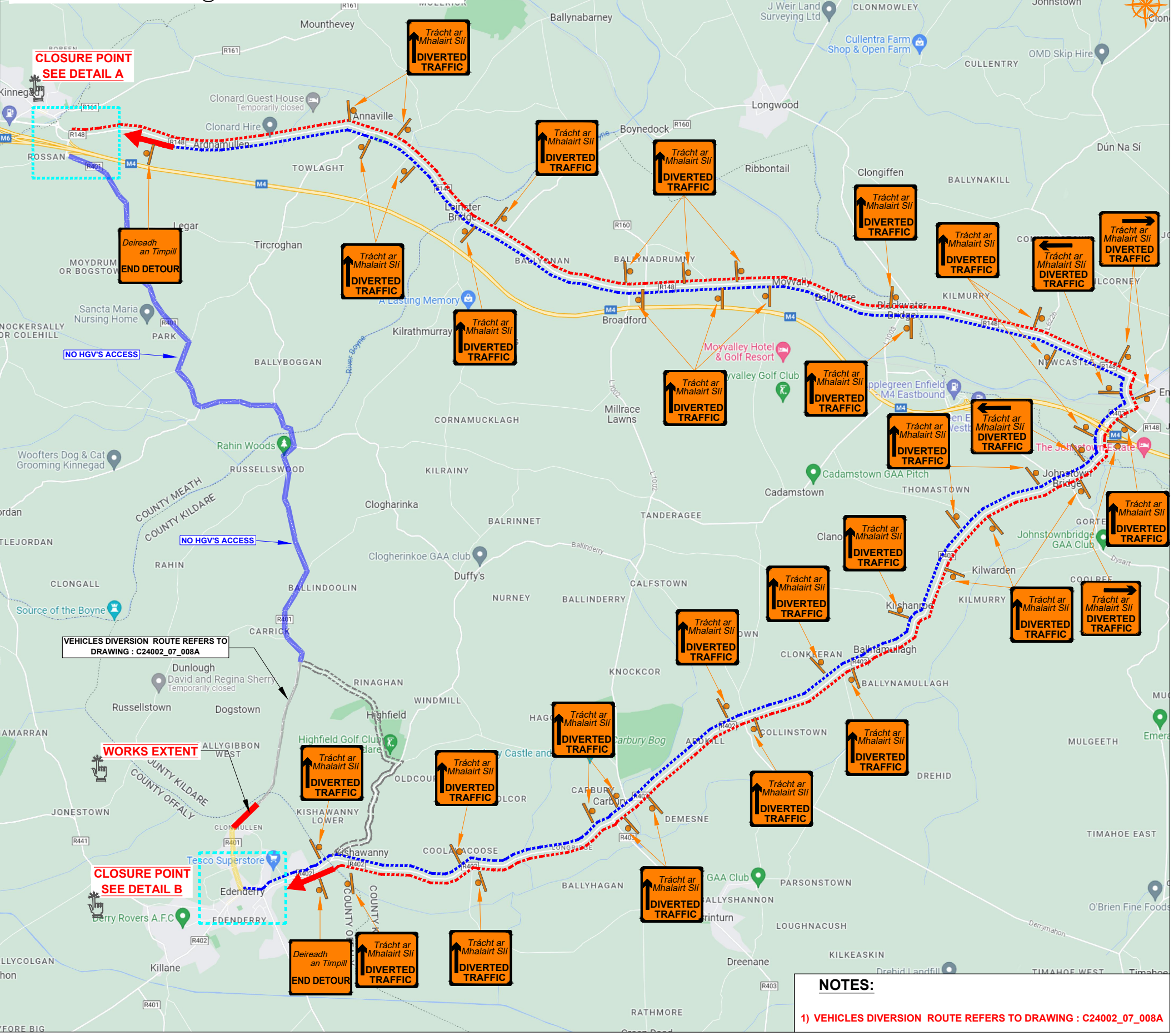


**MD ROADS PROGRAMME 2024, CO. OFFALY**  
**HGV'S DIVERSION ROUTE @ R401-1 SOUTH OF BOYNE BRIDGE**



**NOTES:**  
 1) VEHICLES DIVERSION ROUTE REFERS TO DRAWING : C24002\_07\_008A

**ROAD CONTROL**  
 Copyright Notes:  
 This drawing is the property of Road Control Services Ltd. The design information contained herein is strictly confidential. This document is not to be used, reproduced, disclosed or circulated in whole or in part without prior written consent.

**CLIENT**  
 Kilsaran  
 ideas taking shape

DESIGN PARAMETERS	
Advance Warning Signage	
Sign size	600mm
Sign Visibility	90m
Number of Signs	3
Cumulative Distance	360m
Distance between Advance Warning Signs	120m
<b>Taper</b>	
Lane Taper Rate	N/A
Hard Shoulder Taper Rate	N/A
<b>Speed Limit</b>	80
<b>Road Classification</b>	2(i) <12hours
<b>Cones</b>	
Cone Height	750mm
Taper Spacing	3m
Longitudinal Spacing	12m
<b>Safety Zones</b>	
Longitudinal	45m
Lateral	1.2m
<b>Lanes</b>	
Lane Width	3.0m

**LEGEND**

- Work Area
- Traffic sign
- Traffic cones
- Local Access
- HGV's Diversion Route A
- HGV's Diversion Route B
- Vehicles Diversion Route

1) All information contained in this drawing (including digital data) should be checked and verified prior to any stage of construction;  
 2) All works are to be carried out in accordance with local authority requirements and are to be included in the site-specific safety & health plan;  
 3) Site inspections and maintenance of the traffic management layout is to be agreed with local authority to ensure the safety and integrity of the design;  
 4) Contractor to carry out a site risk assessment prior to the installation of any traffic management plan to ensure that conditions reflect those considered for design post submission;  
 5) Contractor shall be responsible for the provision of ramp access at any change in road surface level where traffic runs on a temporary surface, and for pedestrian/cycle ramps where footpath/cycle-ways have a level discontinuity as per result of the works.

Drn	DJ	<b>EMD Roads Programme 2024, Co. Offaly</b>  TEMPORARY TRAFFIC MANAGEMENT PLAN @R401-1 SOUTH OF BOYNE BRIDGE HGV'S DIVERSION Drawing No C24002_07_008B Rev 0
Chk	SD	
App	DH	
Date	27-04-2024	
Scale	NTS @A3	
Stage	CONSTRUCTION	