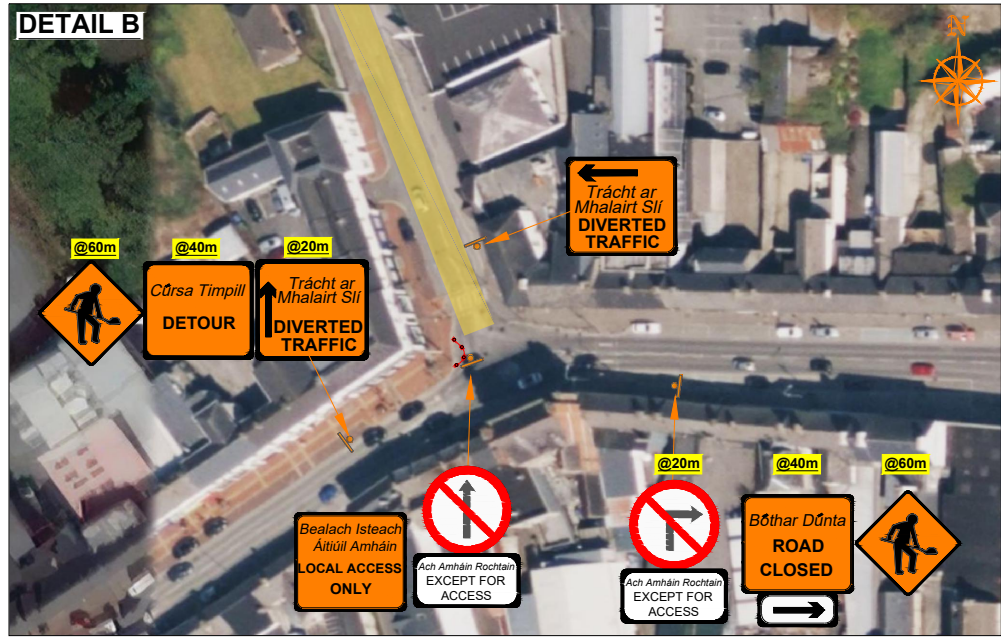
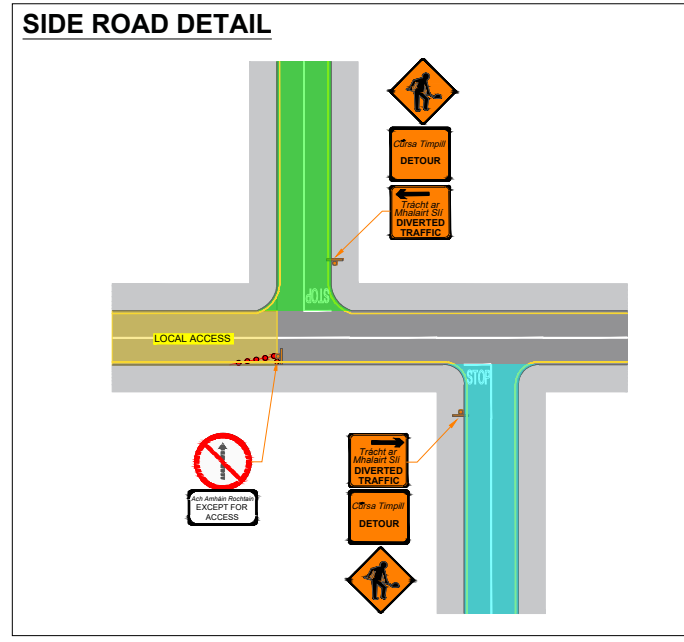
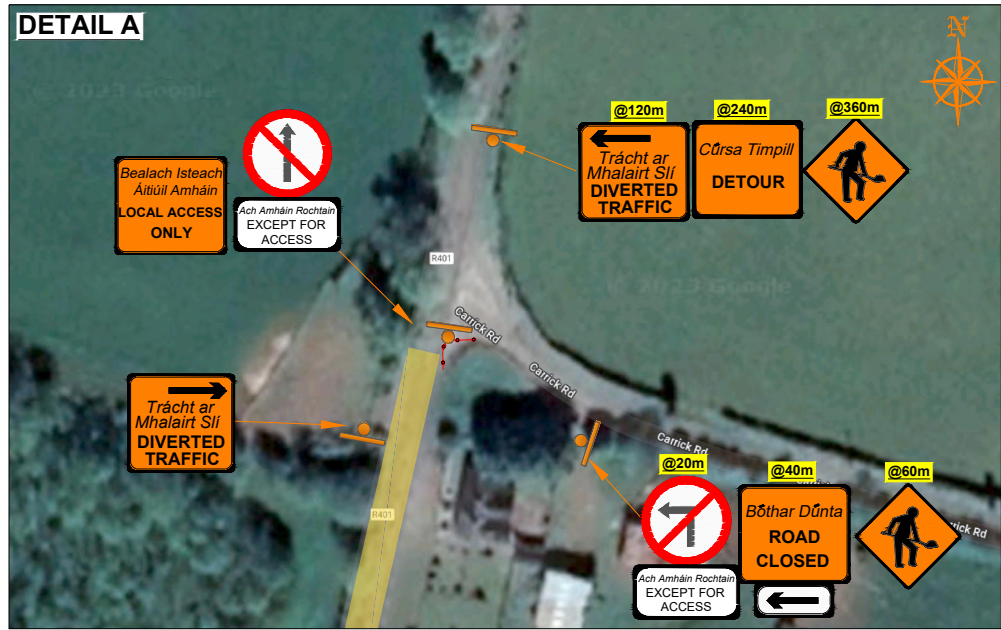
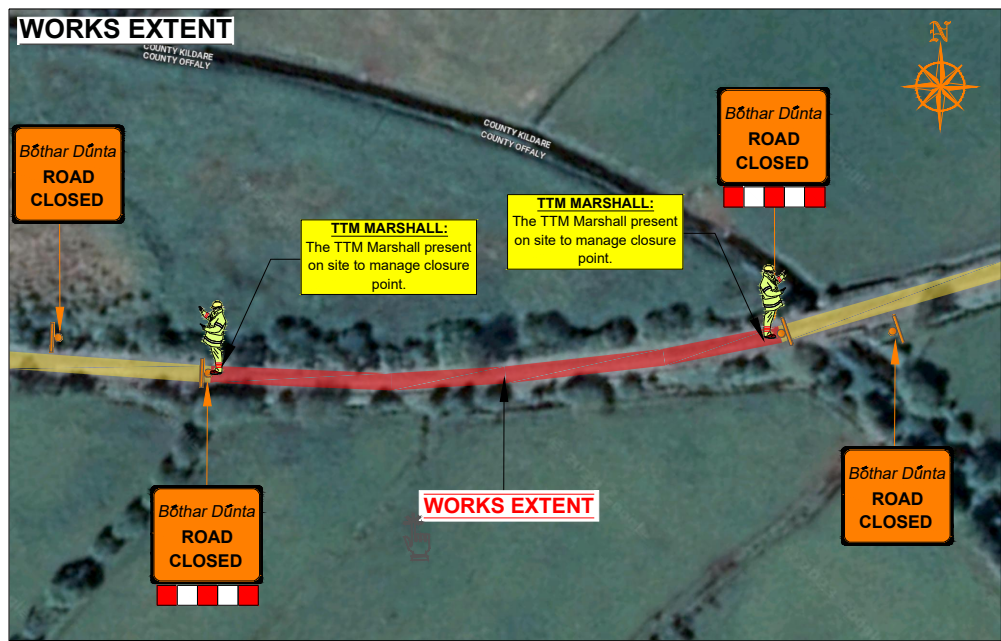
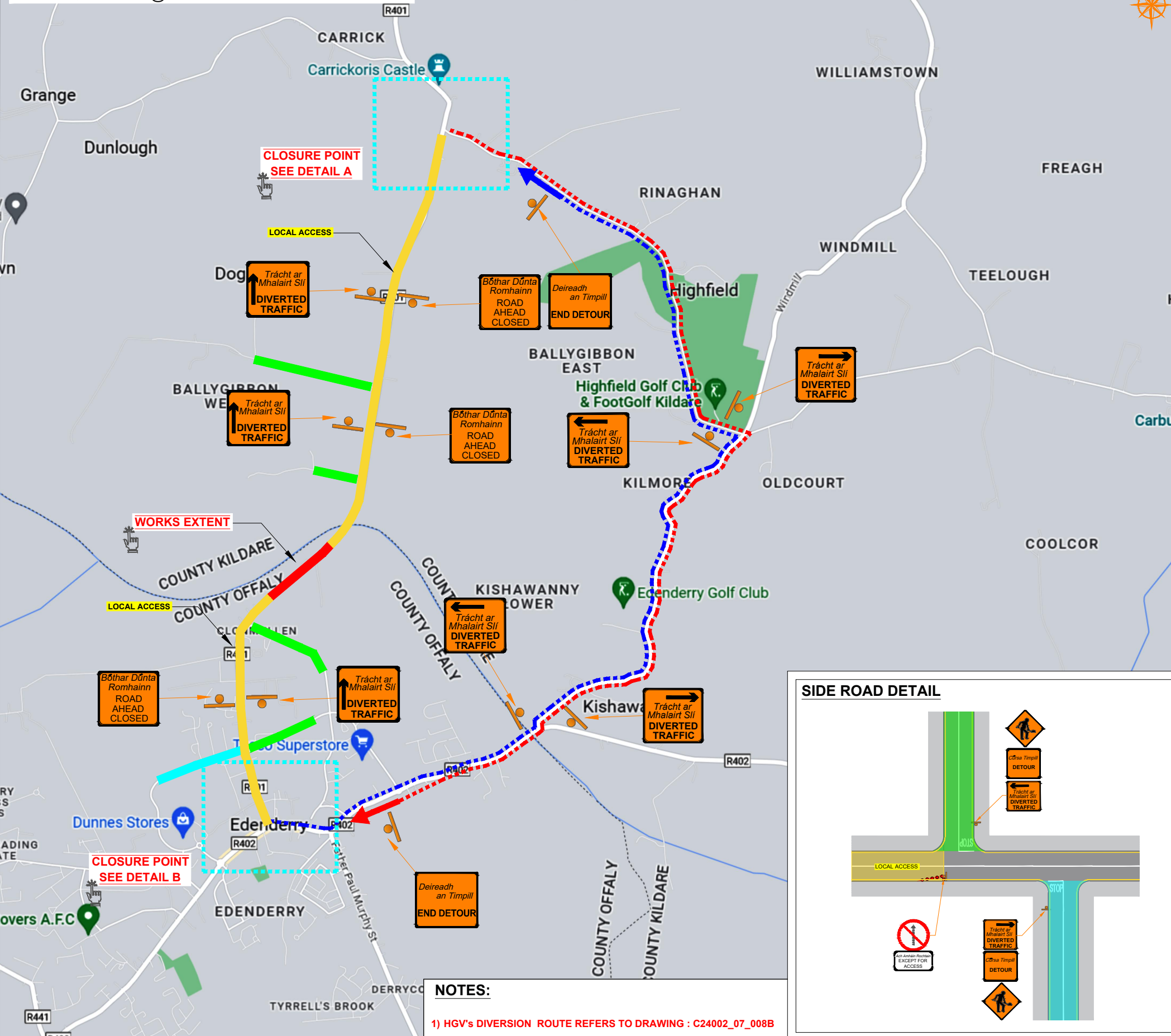


MD ROADS PROGRAMME 2024, CO. OFFALY
DIVERSION ROUTE @ R401-1 SOUTH OF BOYNE BRIDGE



NOTES:
 1) HGV's DIVERSION ROUTE REFERS TO DRAWING : C24002_07_008B

ROAD CONTROL
 Copyright Notes:
 This drawing is the property of Road Control Services Ltd. The design information contained herein is strictly confidential. This document is not to be used, reproduced, disclosed or circulated in whole or in part without prior written consent.

CLIENT
Kilsaran
 ideas taking shape

DESIGN PARAMETERS		Speed Limit	Road Classification
Advance Warning Signage		80	2(i)
Sign size	600mm		<12hours
Sign Visibility	90m		
Number of Signs	3		
Cumulative Distance	360m		
Distance between Advance Warning Signs	120m		
Taper			
Lane Taper Rate	N/A		
Hard Shoulder Taper Rate	N/A		
Cones			
Cone Height	750mm		
Taper Spacing	3m		
Longitudinal Spacing	12m		
Safety Zones			
Longitudinal	45m		
Lateral	1.2m		
Lanes			
Lane Width	3.0m		

LEGEND

- Work Area
- Traffic sign
- Traffic cones
- Local Access
- Diversion Route A
- Diversion Route B

1) All information contained in this drawing (including digital data) should be checked and verified prior to any stage of construction;
 2) All works are to be carried out in accordance with local authority requirements and are to be included in the site-specific safety & health plan;
 3) Site inspections and maintenance of the traffic management layout is to be agreed with local authority to ensure the safety and integrity of the design;
 4) Contractor to carry out a site risk assessment prior to the installation of any traffic management plan to ensure that conditions reflect those considered for design post submission;
 5) Contractor shall be responsible for the provision of ramp access at any change in road surface level where traffic runs on a temporary surface, and for pedestrian/cycle ramps where footpath/cycle-ways have a level discontinuity as per result of the works.

Drn	DJ
Chk	SD
App	DH
Date	27-04-2024
Scale	NTS @A3
Stage	CONSTRUCTION

EMD Roads Programme 2024, Co. Offaly

Title
TEMPORARY TRAFFIC MANAGEMENT PLAN @R401-1 SOUTH OF BOYNE BRIDGE

Drawing No C24002_07_008A Rev 0