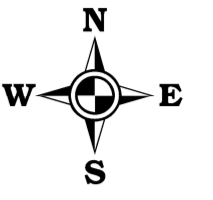
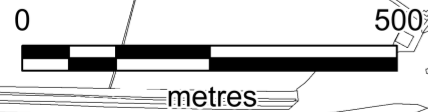
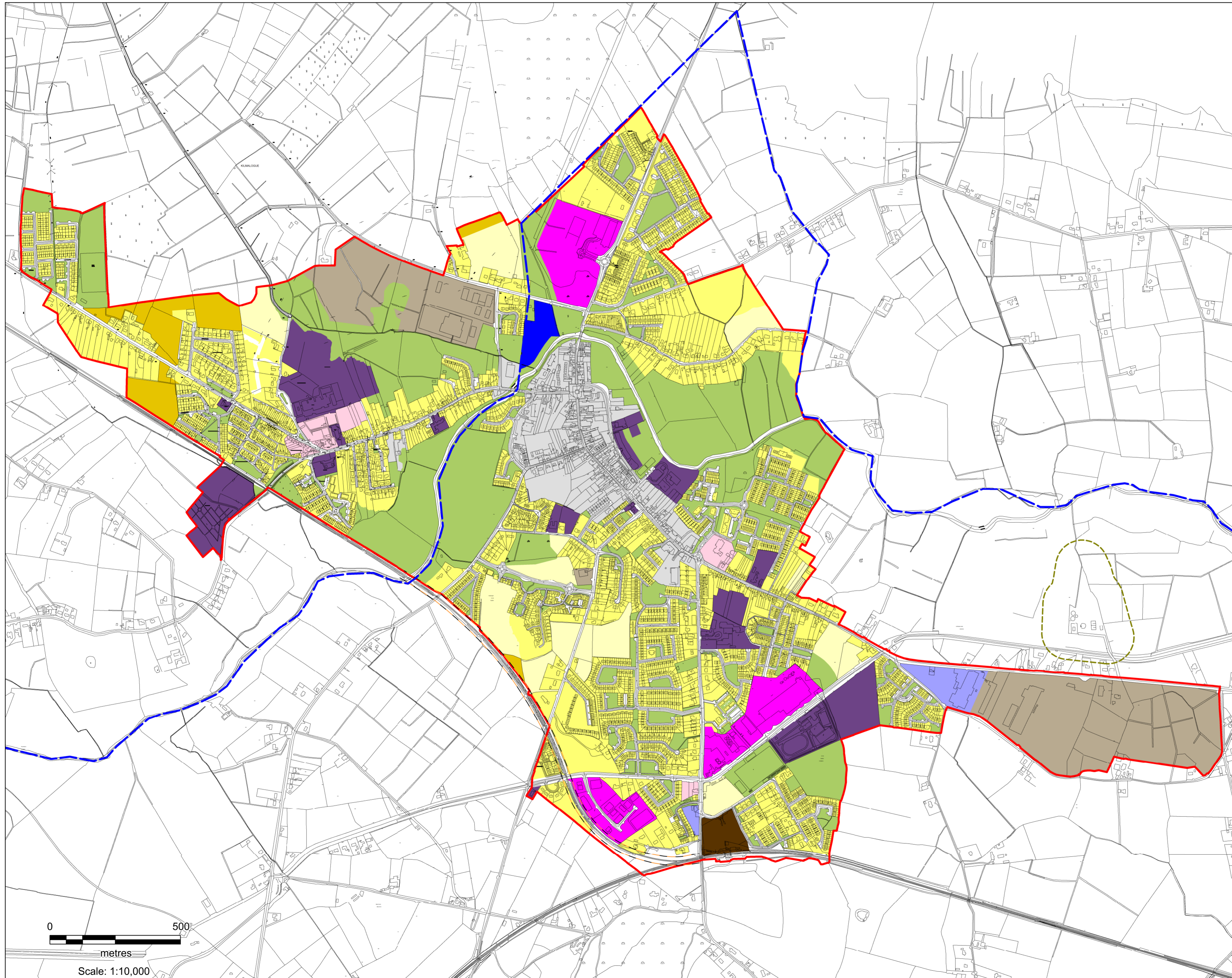


**DRAFT  
PORTARLINGTON  
JOINT LOCAL AREA PLAN  
2025-2031**



**Legend**

- Community, Educational & Institutional (Community Services/Facilities - OCC)
- Enterprise & Employment
- General Business
- Industrial & Warehousing (Industrial & Warehousing - OCC)
- Neighbourhood Centre (Neighbourhood Centre - OCC)
- Open Space & Amenity (Open Space, Amenity & Recreation - OCC)
- Residential 1 - Existing Residential (Existing Residential - OCC)
- Residential 2 - New Proposed Residential (New Residential - OCC)
- Strategic Reserve (Strategic Residential Reserve - OCC)
- Tourism & Leisure
- Town Centre (Primary / Core Retail Area) (Town Centre/Mixed Use - OCC)
- Transport & Utilities
- Sewerage Treatment Plant Buffer
- Development Boundary
- County Boundary



Scale: 1:10,000

**MAP 1  
LAND USE ZONING**



**LAOIS & OFFALY  
COUNTY COUNCIL'S  
PLANNING SECTIONS**



Drawn:  
Bryan Scully

Checked:  
Olive O'Donnell

Approved:  
David O'Hara

Note: Details shown on this map are for information purposes only. Further details on any item should be verified with Laois County Council. This map has been produced by Laois County Council with available Local Authority and Tallis Eirann Surveying Base Data. © Tallis Eirann Surveying, Licence number CVAL0503000. NOTE - UNAUTHORISED REPRODUCTION OF THIS MAP INFRINGES STATE COPYRIGHT.