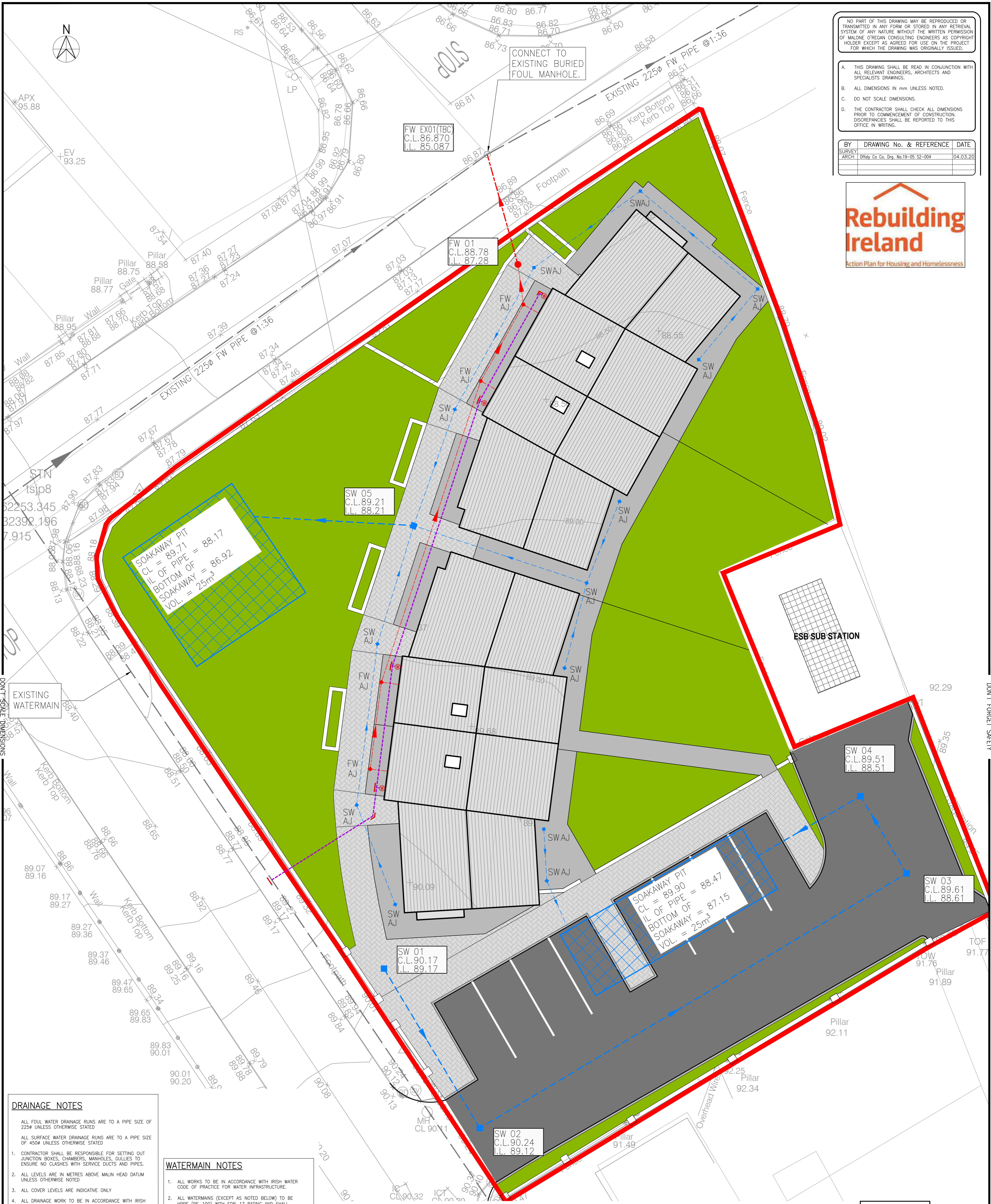


NO PART OF THIS DRAWING MAY BE REPRODUCED OR TRANSMITTED IN ANY FORM OR STORED IN ANY RETRIEVAL SYSTEM OF ANY NATURE WITHOUT THE WRITTEN PERMISSION OF MALONE O'REGAN CONSULTING ENGINEERS AS COPYRIGHT HOLDER EXCEPT AS AGREED FOR USE ON THE PROJECT FOR WHICH THE DRAWING WAS ORIGINALLY ISSUED.

- A. THIS DRAWING SHALL BE READ IN CONJUNCTION WITH ALL RELEVANT ENGINEERS, ARCHITECTS AND SPECIALISTS DRAWINGS.
- B. ALL DIMENSIONS IN mm UNLESS NOTED.
- C. DO NOT SCALE DIMENSIONS.
- D. THE CONTRACTOR SHALL CHECK ALL DIMENSIONS PRIOR TO COMMENCEMENT OF CONSTRUCTION. DISCREPANCIES SHALL BE REPORTED TO THIS OFFICE IN WRITING.

BY	DRAWING No. & REFERENCE	DATE
SURVEY		
ARCH	Offaly Co. Co. Drg. No.19-05 S2-004	04.03.20



DRAINAGE NOTES

1. ALL FOUL WATER DRAINAGE RUNS ARE TO A PIPE SIZE OF 225Ø UNLESS OTHERWISE STATED
2. ALL SURFACE WATER DRAINAGE RUNS ARE TO A PIPE SIZE OF 450Ø UNLESS OTHERWISE STATED
3. CONTRACTOR SHALL BE RESPONSIBLE FOR SETTING OUT JUNCTION BOXES, CHAMBERS, MANHOLES, GULLIES TO ENSURE NO CLASHES WITH SERVICE DUCTS AND PIPES.
4. ALL LEVELS ARE IN METRES ABOVE MALIN HEAD DATUM UNLESS OTHERWISE NOTED
5. ALL COVER LEVELS ARE INDICATIVE ONLY
6. ALL DRAINAGE WORK TO BE IN ACCORDANCE WITH IRISH WATER CODE OF PRACTICE FOR WASTE WATER INFRASTRUCTURE AND STANDARD DETAILS.
7. MANHOLES, MANHOLES COVERS AND ROAD GULLY GRATINGS TO STANDARD SPECIFICATION
8. ALL PIPE DIAMETERS ARE NOMINAL
9. THE CONTRACTOR MUST SATISFY HIMSELF IN RESPECT TO THE LOCATION OF ALL EXISTING SERVICES.
10. ALL PIPEWORK TO BE UPVC IN ACCORDANCE WITH SECTION 3.13 AND 3.14 OF IRISH WATER CODE OF PRACTICE FOR WASTE WATER INFRASTRUCTURE.
11. 600mm MAX LENGTH ROCKER PIPES ARE TO BE PROVIDED ON SEWERS WHERE:
 - A PIPE ENTERS A MANHOLE OR PUMPING STATION
 - A PIPE LEAVES A MANHOLE
 - A PIPE ENTERS CONCRETE ENCASMENT
 - A PIPE LEAVES CONCRETE ENCASMENT
 - ANY OTHER LOCATION AS DIRECTED BY THE ENGINEER
12. ALL SEWER ROCKER PIPES ARE TO BE FORMED BY CUTTING AND TRIMMING A LENGTH OF SPIGOT & SOCKET PIPE TO FORM A SPIGOT AT THE CUT END, THEREBY FORMING SPIGOT & SOCKET JOINTS AT BOTH ENDS OF THE ROCKER PIPE
13. ALL ROCKER PIPES SHALL BE NO MORE THAN 150mm FROM THEIR ASSOCIATED MANHOLE, PUMPING STATION, CONCRETE ENCASED SECTION OR VALVE CHAMBER
14. ALL MANHOLE COVERS LOCATED IN TRAFFICKED AREA ARE TO BE SWD RESISTANT
15. WHERE COVER TO PIPE IS LESS THAN 900mm UNDER GRASSED AREAS OR LESS THAN 1200mm UNDER ROADWAYS THE PIPE SHOULD BE SURROUNDED IN CONCRETE

WATERMAIN NOTES

1. ALL WORKS TO BE IN ACCORDANCE WITH IRISH WATER CODE OF PRACTICE FOR WATER INFRASTRUCTURE.
2. ALL WATERMANS (EXCEPT AS NOTED BELOW) TO BE HPPE (PE-100) WITH SDR-17 RATING AND SHALL COMPLY WITH SECTION 3.9 OF IRISH WATER CODE OF PRACTICE.
3. CONCRETE ANCHOR BLOCKS AT DEAD ENDS, TEES, BOTH SIDES OF SLUICE VALVES AND AT ALL BENDS OVER 22.5°.
4. MIN. COVER TO WATERMAIN TO BE 900MM.
5. WATERMANS TO BE PRESSURE TESTED IN ACCORDANCE WITH IRISH WATER CODE OF PRACTICE FOR WATER INFRASTRUCTURE SECTION 4.10.3
6. PRIOR TO COMMISSIONING THE WATERMAIN SHALL BE SWABBED AND DISINFECTED IN ACCORDANCE WITH IRISH WATER CODE OF PRACTICE FOR WATER INFRASTRUCTURE.
7. SEE MANUFACTURER'S DETAILED INSTRUCTIONS PRIOR TO THE INSTALLATION OF WATER METER.
8. CHECK THAT FLOW ARROW DIRECTION IS POINTING IN THE SAME DIRECTION AS THE FLOW IN THE WATERMAIN.
9. DRAW-WIRES TO BE LEFT IN ALL DUCTS.
10. DF SPACER AND S.V. TO BE THE SAME # AS METER.
11. SEPARATION DISTANCES FROM EXISTING PLANTING SHALL COMPLY WITH IRISH WATER STANDARD DETAIL STD-W-12.
12. CONCRETE THRUST BLOCKS AT DEAD ENDS, TEES, BOTH SIDES OF SLUICE VALVES AND AT ALL BENDS OVER 22.5° THRUST BLOCKS TO BE PROVIDED IN ACCORDANCE WITH IRISH WATER STANDARD DETAIL STD-W-28 (12-15 BAR TEST PRESSURE)
13. NO HYDRANTS OR SLUICE VALVES ARE TO BE LOCATED WITHIN TRAFFICKED AREAS
14. WATERMAIN METER TYPE TO BE AGREED WITH DUBLIN CITY COUNCIL / IRISH WATER

LEGEND

- PROPOSED FOUL DRAINAGE LINE
- PROPOSED FOUL MANHOLE
- PROPOSED FOUL ARMSTRONG JUNCTION
- EXISTING COMBINED DRAINAGE LINE
- EXISTING COMBINED MANHOLE
- EXISTING COMBINED ARMSTRONG JUNCTION
- PROPOSED SURFACE DRAINAGE LINE
- PROPOSED SURFACE MANHOLE
- PROPOSED SURFACE ARMSTRONG JUNCTION
- PROPOSED SURFACE ROAD GULLY
- PROPOSED COMBINED DRAINAGE LINE
- PROPOSED COMBINED MANHOLE
- PROPOSED WATERMAIN
- PROPOSED HYDRANT
- PROPOSED AIR VALVE
- PROPOSED SLUICE VALVE
- PROPOSED WATER METER
- PROPOSED THRUST BLOCK
- EXISTING WATERMAIN LINE

PLANNING
21/09/2020

REV	DESCRIPTION	DATE	DRWN BY	CHKD BY
P	ISSUED FOR PLANNING	21.09.20	KD	ROD

MALONE O'REGAN
CONSULTING ENGINEERS

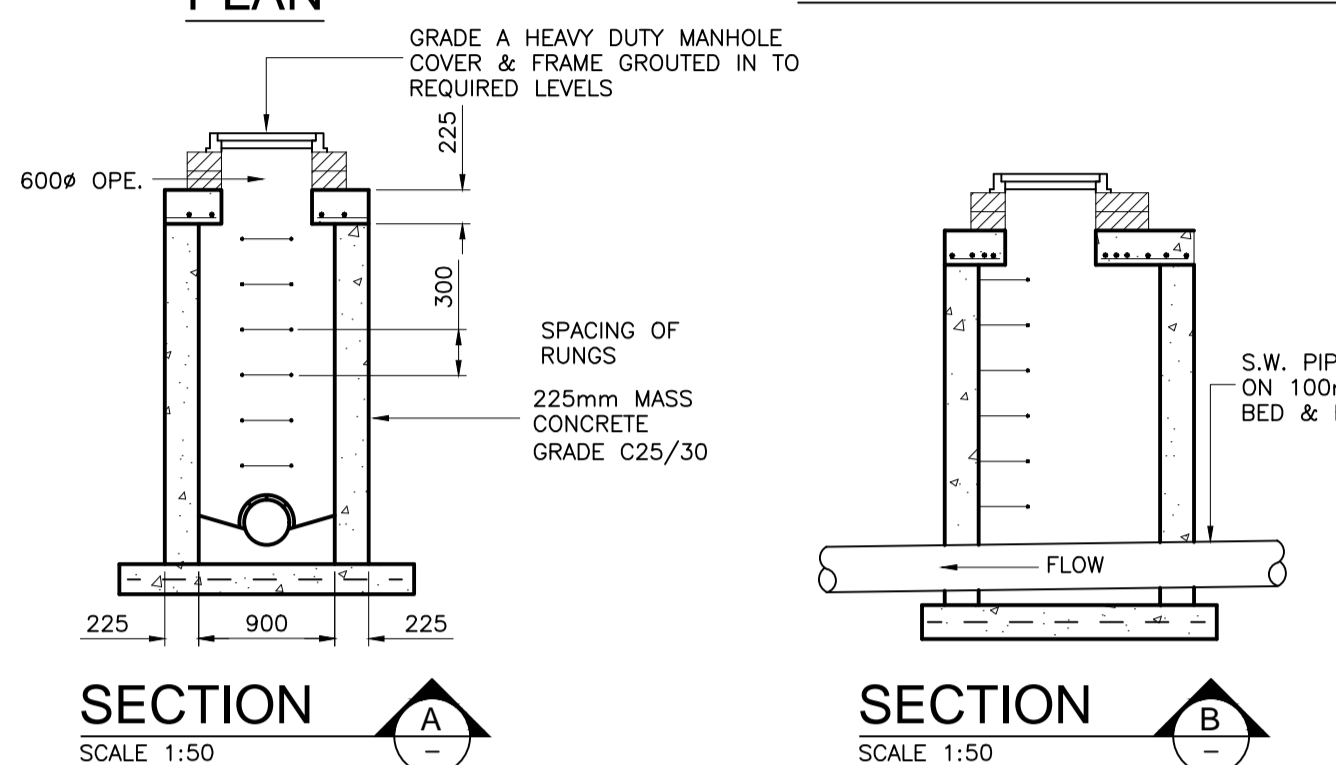
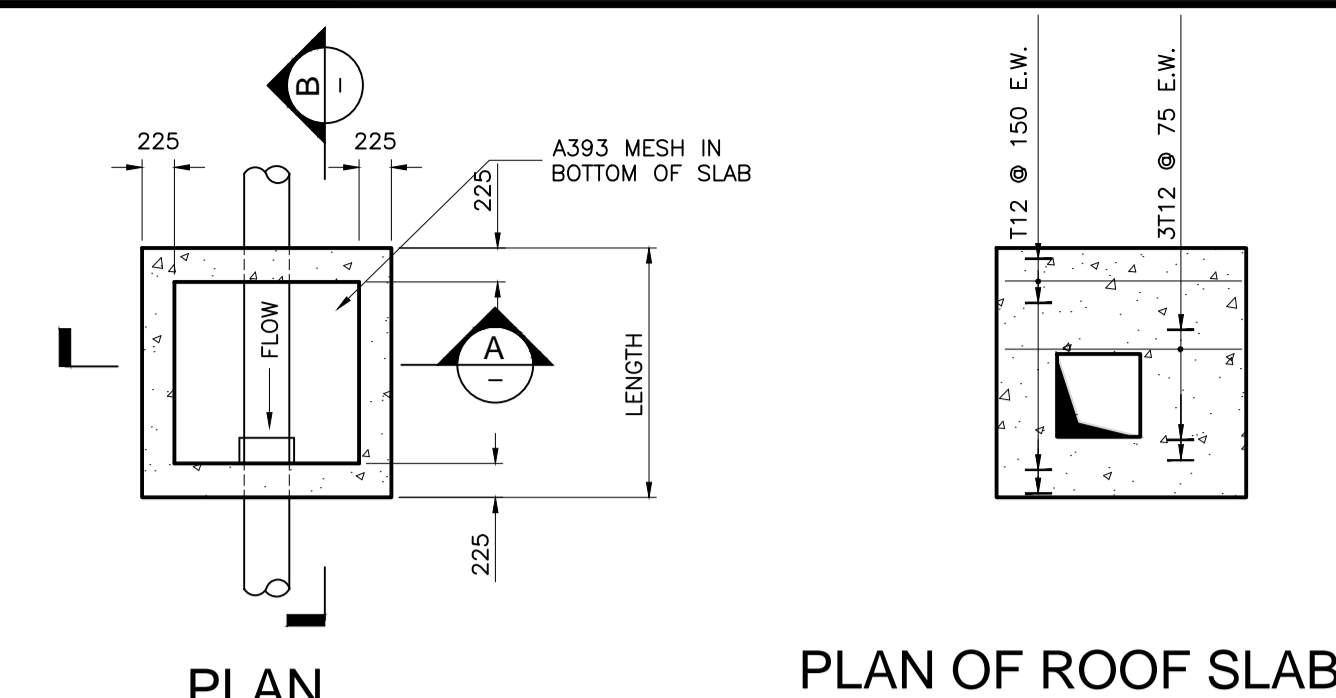
2B Richview Office Park,
Clonskeagh,
DUBLIN 14.

Tel: +353 1 260 2655
Fax: +353 1 260 2660
Email: dublin@mor.ie

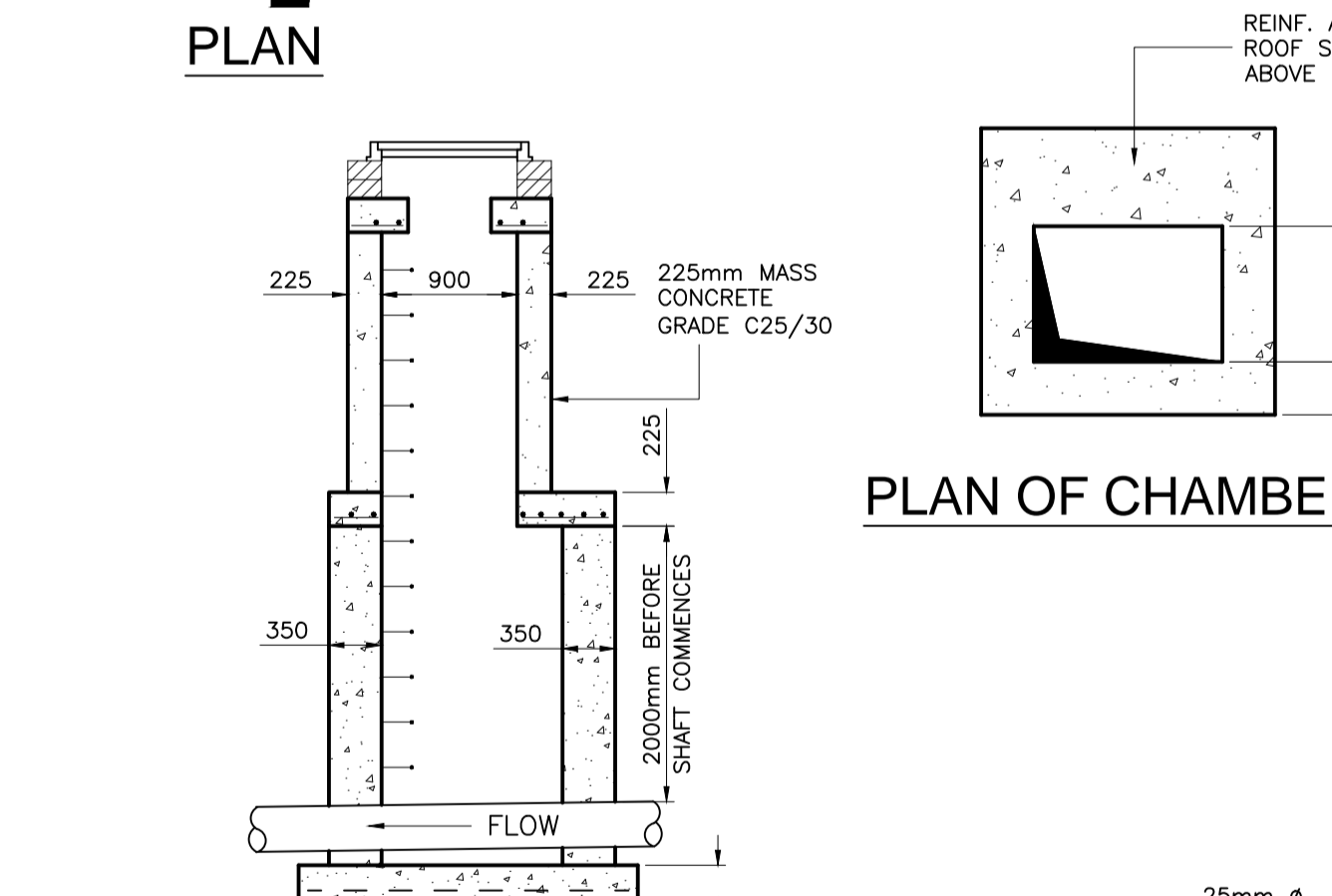
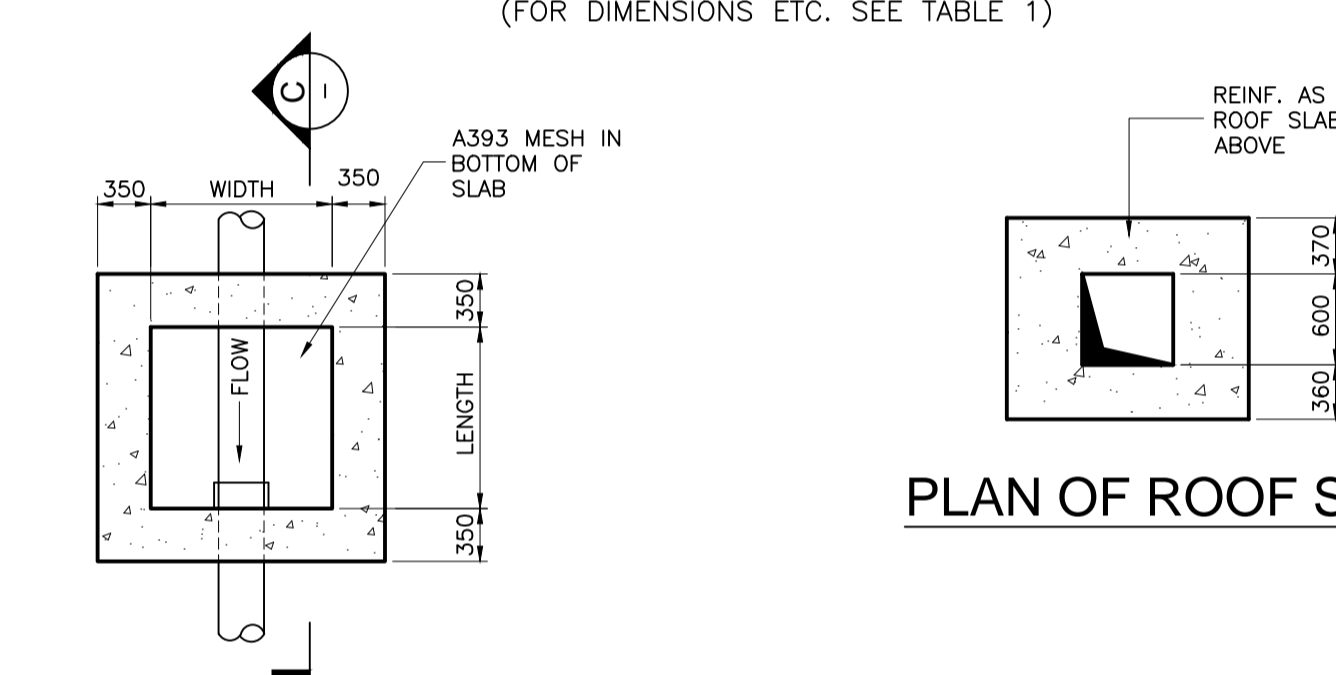
St. Catherine's House,
Catherine Street
WATERFORD

Tel: +353 51 876 855
Fax: +353 51 876 828
Email: waterford@mor.ie

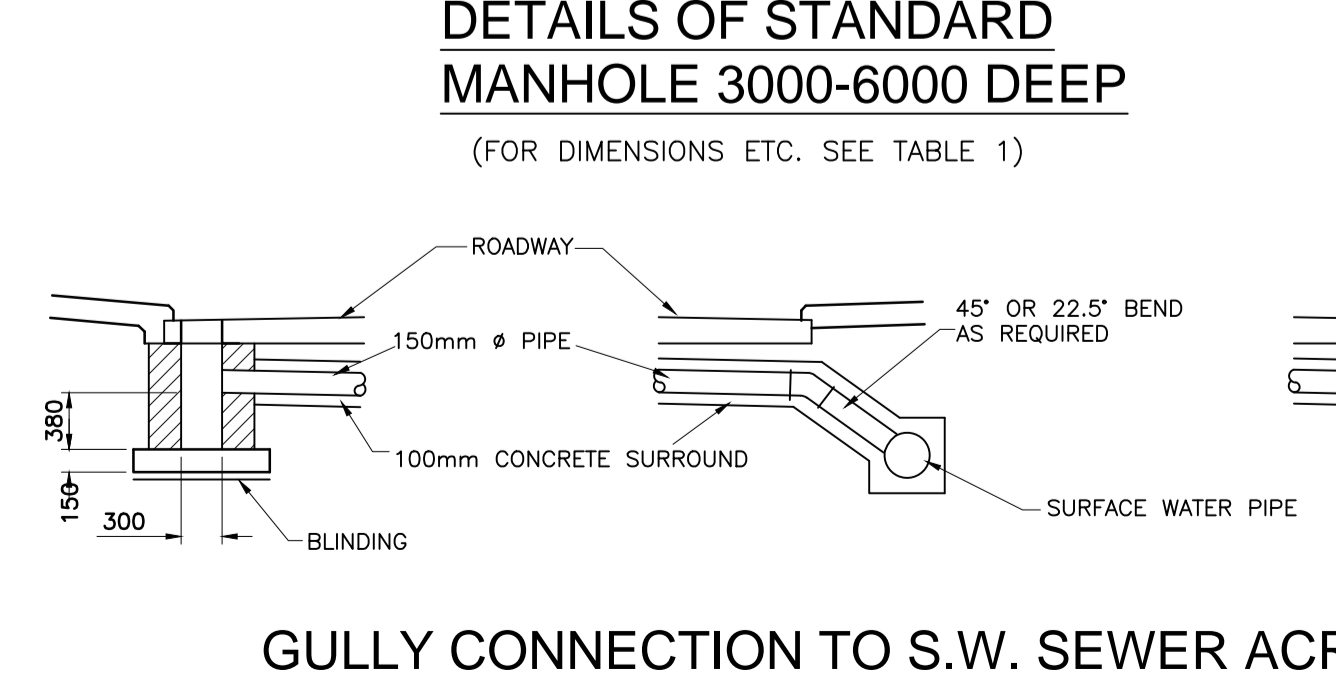
CLIENT NAME			DRAWING NAME				
OFFALY COUNTY COUNCIL			PROPOSED DRAINAGE LAYOUT				
HOUSING DEVELOPMENT			INCL. SURFACE WATER, FOUL				
EDENDERRY, CO. OFFALY			WATER, & WATERMAIN				
JOB NUMBER	DRAWING NUMBER	REVISION	SHEET SIZE	SCALE	DATE	DRAWN BY	ENGINEER
19055	EDE-101	P	A1	1:100	SEPT'20	KD	ROD



DETAILS OF STANDARD MANHOLE UP TO 3000 DEEP
(FOR DIMENSIONS ETC. SEE TABLE 1)



DETAILS OF STANDARD MANHOLE 3000-6000 DEEP
(FOR DIMENSIONS ETC. SEE TABLE 1)

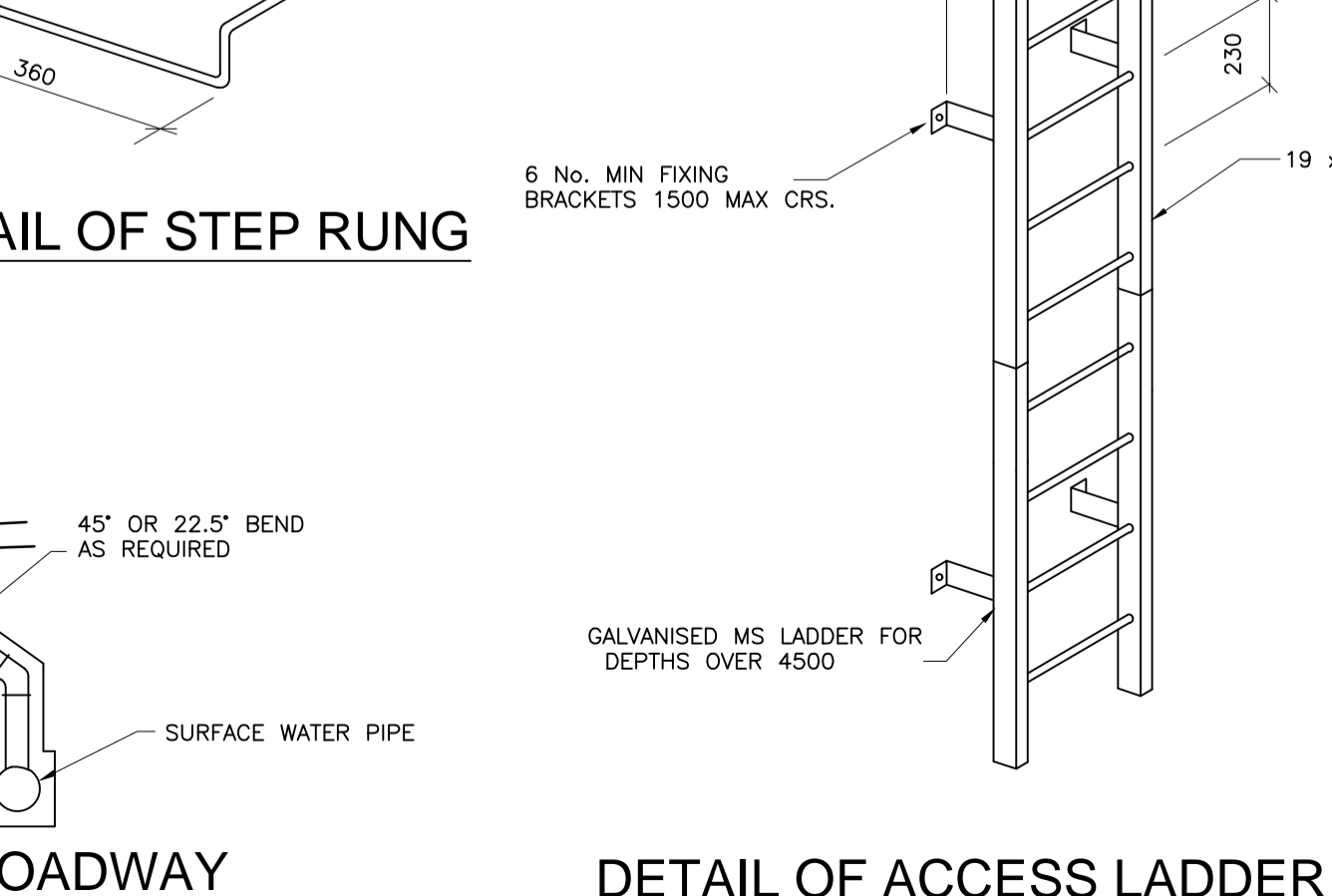
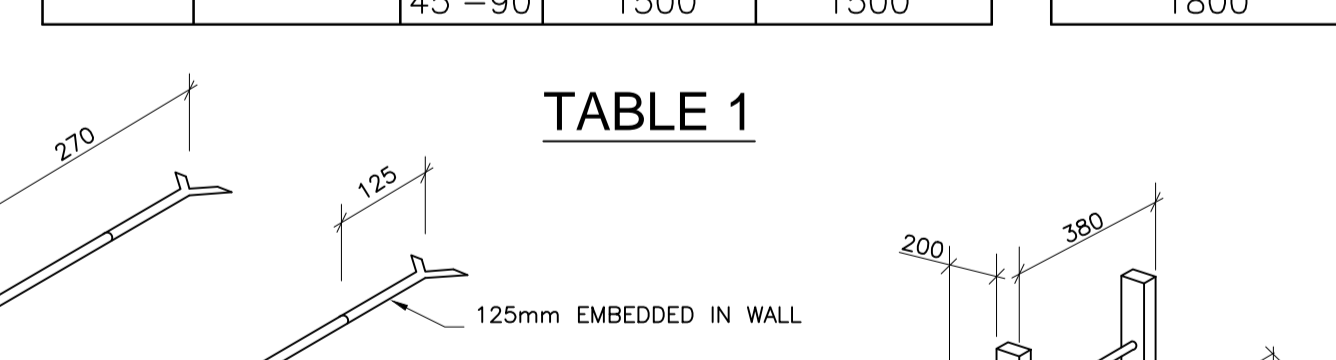


GULLY CONNECTION TO S.W. SEWER ACROSS ROADWAY

DEPTH	DIAMETER OF PIPE	ANGLE	MINIMUM DIMENSIONS		P.C. CONCRETE CIRCULAR SHAFT INTERNAL MH Ø
			LENGTH	WIDTH	
LESS THAN 1200	100	0-90°	1200	750	1050
	150	0-90°	1200	750	1050
	225	0-30°	1200	750	1050
		30-90°	1200	750	1050
	300	0-30°	1200	750	1050
		30-90°	1200	900	1050
	375	0-90°	1200	900	1050
	450	0	1200	1050	1050
		0-90°	1200	1200	1050
	525	0	1200	1200	1050
0-90°		1200	1200	1200	
600		0	1200	1200	1200
		0-45°	1200	1350	1200
750	0-45°	1200	1350	1350	
	45-90°	1350	1350	1350	
900	0-45°	1350	1500	1500	
	45-90°	1500	1500	1800	

1200-3500	100	0-90°	1200	900	1200
	150	0-90°	1200	900	1200
	225	0-90°	1200	900	1200
	300	0-90°	1200	900	1200
	375	0-90°	1200	900	1200
	450	0	1200	1050	1200
	525	0-45°	1350	1350	1350
		45-90°	1200	1350	1350
	600	0-45°	1200	1350	1350
		45-90°	1350	1350	1350
750	0-45°	1200	1350	1350	
	45-90°	1350	1350	1350	
900	0-45°	1350	1500	1800	
	45-90°	1500	1500	1800	

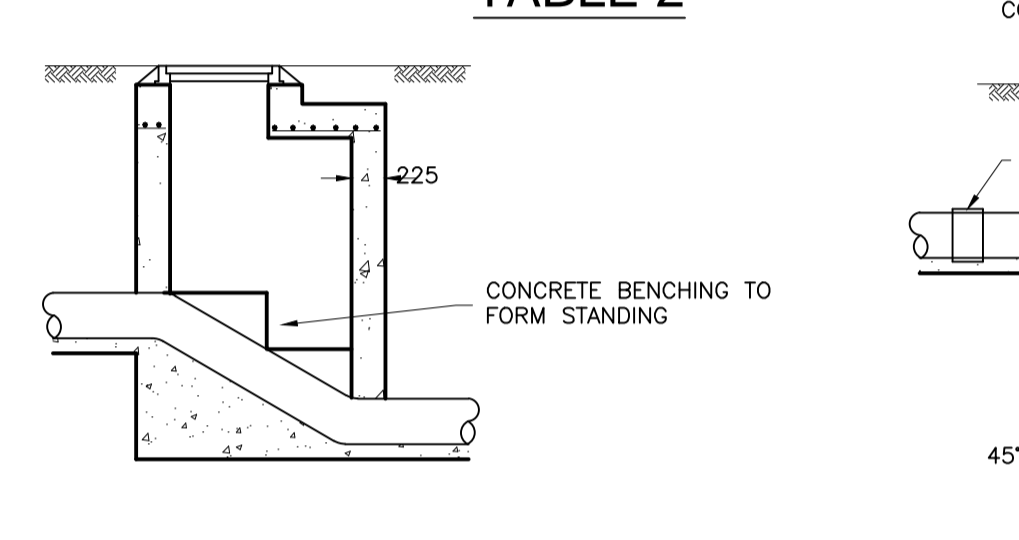
3500-6000	100	0-90°	1200	900	1200
	150	0-90°	1200	900	1200
	225	0-90°	1200	900	1200
	300	0-90°	1200	900	1200
	375	0-90°	1200	900	1200
	450	0-45°	1200	1350	1350
	525	0-45°	1200	1350	1350
		45-90°	1350	1350	1500
	600	0-45°	1200	1350	1500
		45-90°	1350	1350	1500
750	0-45°	1200	1350	1500	
	45-90°	1350	1350	1500	
900	0-45°	1350	1500	1800	
	45-90°	1500	1500	1800	



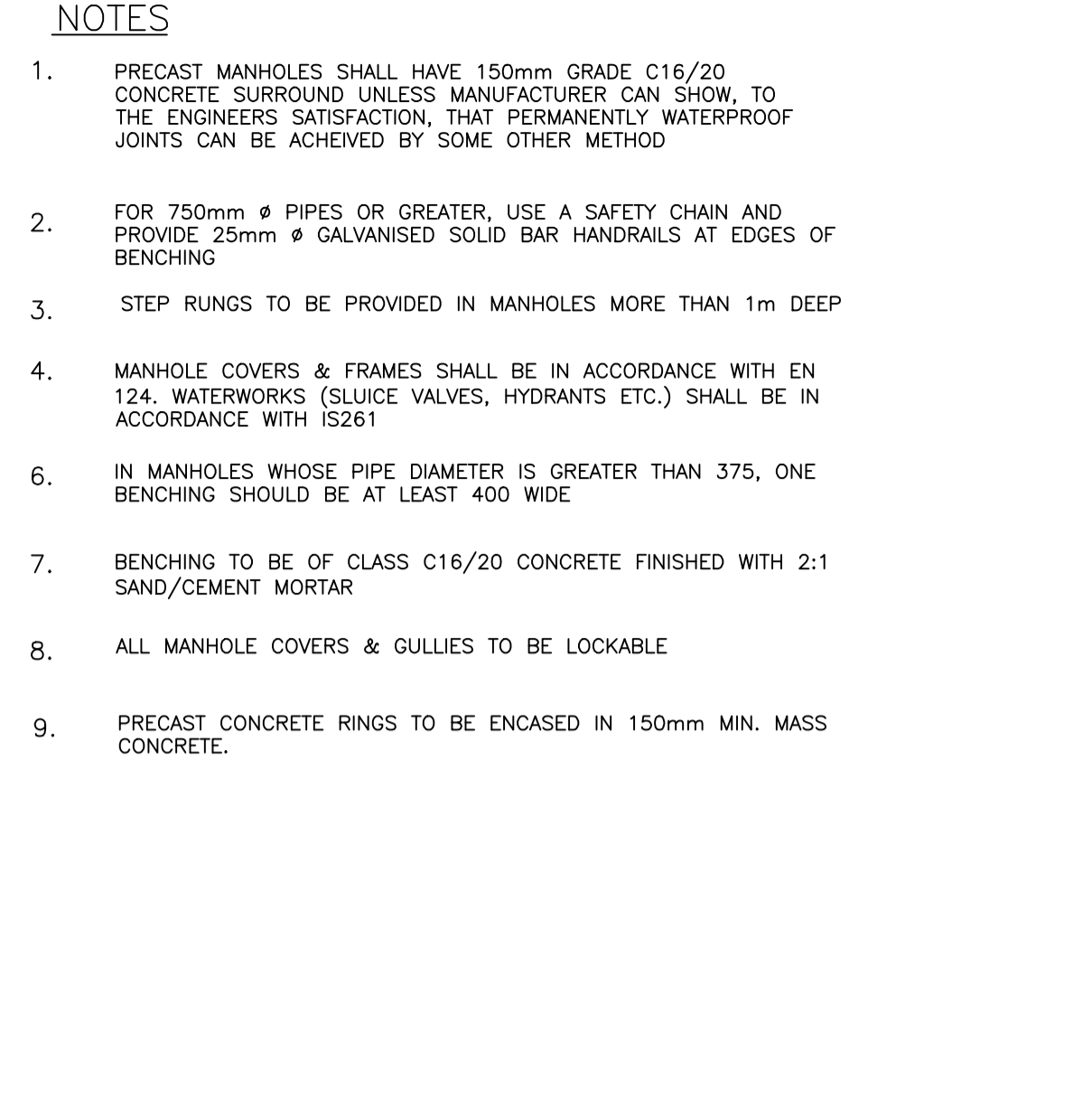
DETAIL OF ACCESS LADDER

MANHOLE TYPE	DIA. OF INLET	DROP	DIA. OF DROP	X
TYPE A	225	0-500	225	-
		500-1000	225	225
		> 1000	225	225
TYPE B	300	0-600	300	-
		600-1000	300	300
		> 1000	225	300
TYPE C	375	0-750	450	-
		750-1200	300	450
		> 1200	300	300
TYPE D	450	0-750	450	-
		750-1200	300	450
		> 1200	300	450
TYPE A	525	0-750	525	-
		750-1200	375	525
		> 1200	300	375
TYPE B	600	0-750	600	-
		750-1500	375	375
		> 1500	375	375
TYPE A	750	0-750	600	-
		750-1500	450	450
		> 1500	375	450

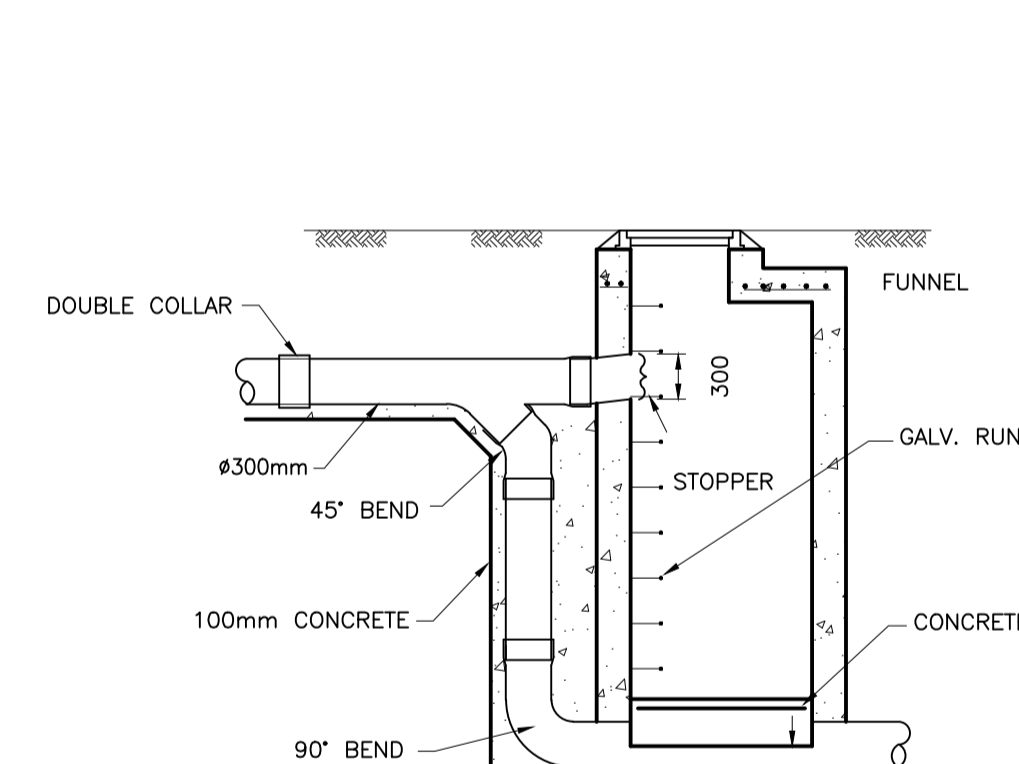
TABLE 2



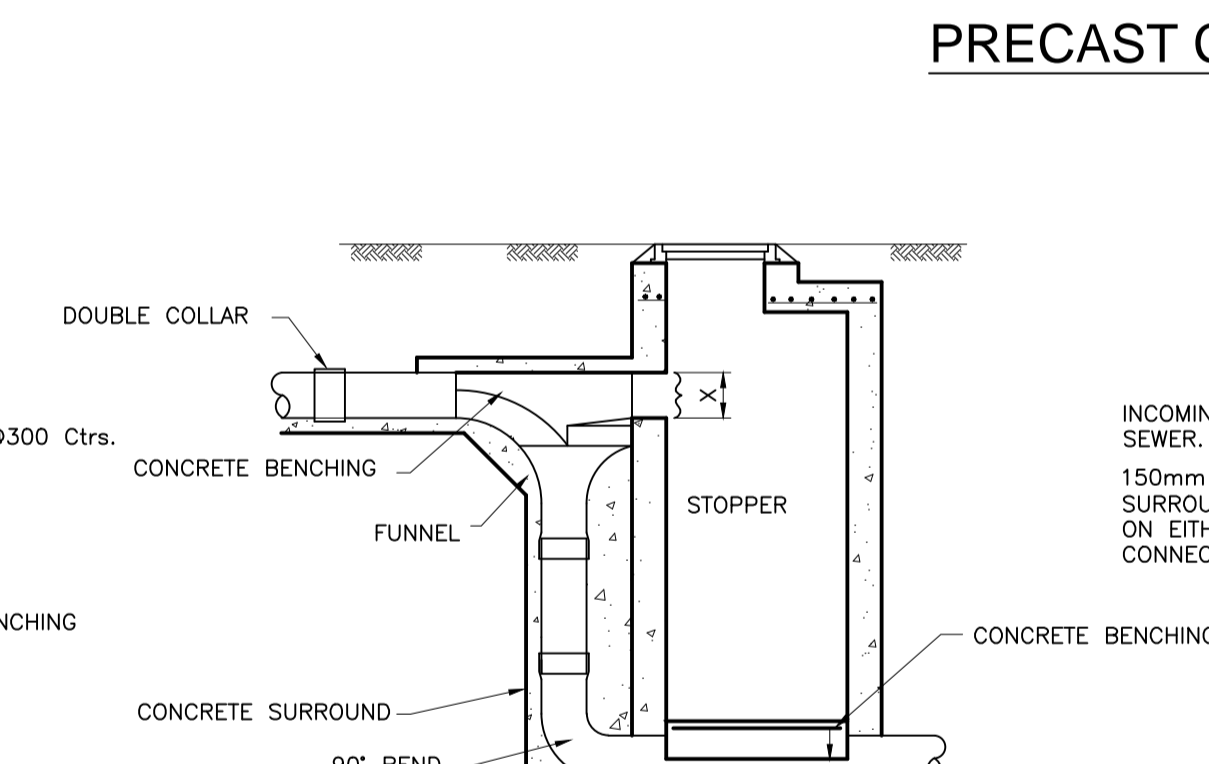
MANHOLE TYPE 'A' RAMP MANHOLE



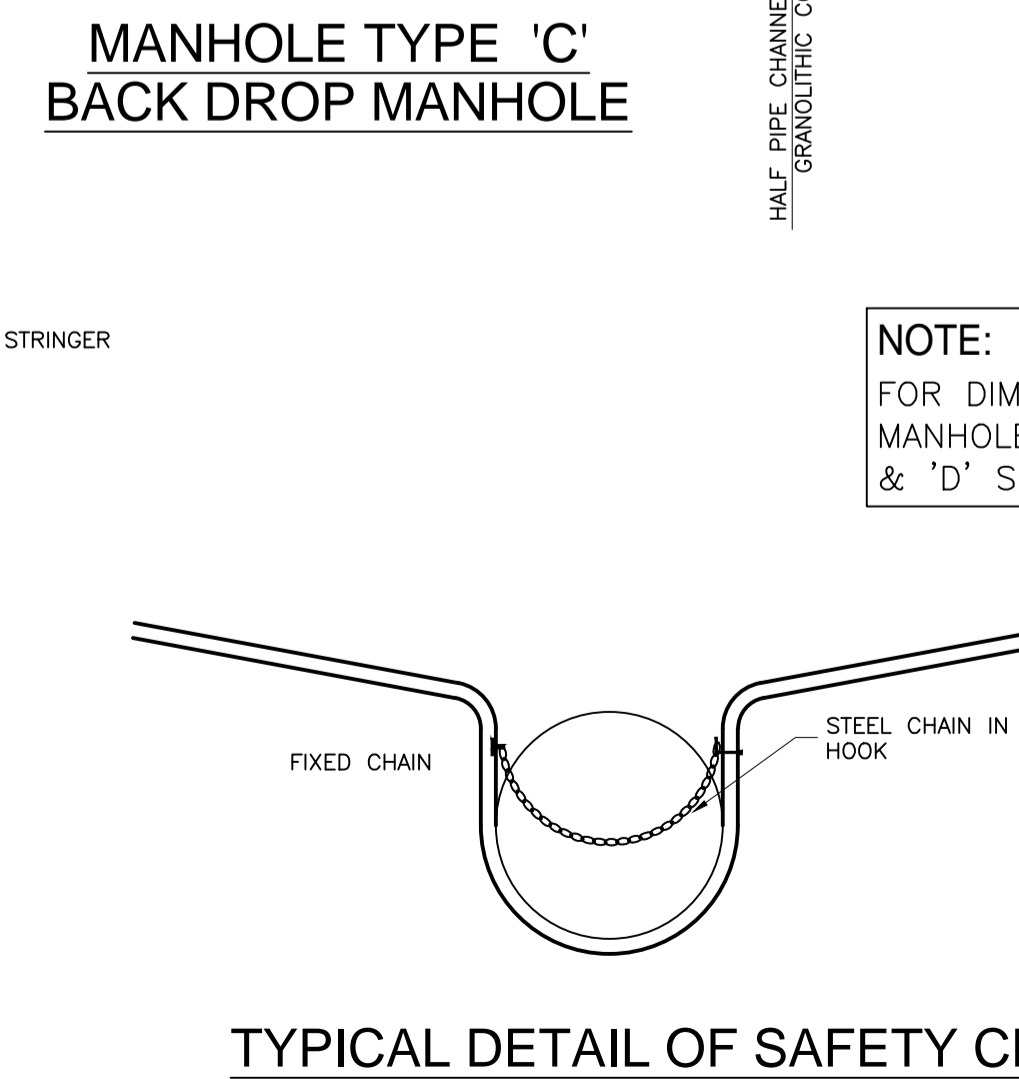
MANHOLE TYPE 'B' INTERMEDIATE DROP MANHOLE



MANHOLE TYPE 'C' BACK DROP MANHOLE



MANHOLE TYPE 'D' BACK DROP MANHOLE



TYPICAL DETAIL OF SAFETY CHAIN

- NOTES**
- PRECAST MANHOLES SHALL HAVE 150mm GRADE C16/20 CONCRETE SURROUND UNLESS MANUFACTURER CAN SHOW. TO THE ENGINEERS SATISFACTION, THAT PERMANENTLY WATERPROOF JOINTS CAN BE ACHIEVED BY SOME OTHER METHOD
 - FOR 750mm Ø PIPES OR GREATER, USE A SAFETY CHAIN AND PROVIDE 25mm Ø GALVANISED SOLID BAR HANDRAILS AT EDGES OF BENCHING
 - STEP RUNGS TO BE PROVIDED IN MANHOLES MORE THAN 1m DEEP
 - MANHOLE COVERS & FRAMES SHALL BE IN ACCORDANCE WITH EN 124. WATERWORKS (SLUICE VALVES, HYDRANTS ETC.) SHALL BE IN ACCORDANCE WITH IS261
 - IN MANHOLES WHOSE PIPE DIAMETER IS GREATER THAN 375, ONE BENCHING SHOULD BE AT LEAST 400 WIDE
 - BENCHING TO BE OF CLASS C16/20 CONCRETE FINISHED WITH 2:1 SAND/CEMENT MORTAR
 - ALL MANHOLE COVERS & GULLIES TO BE LOCKABLE
 - PRECAST CONCRETE RINGS TO BE ENCASED IN 150mm MIN. MASS CONCRETE.

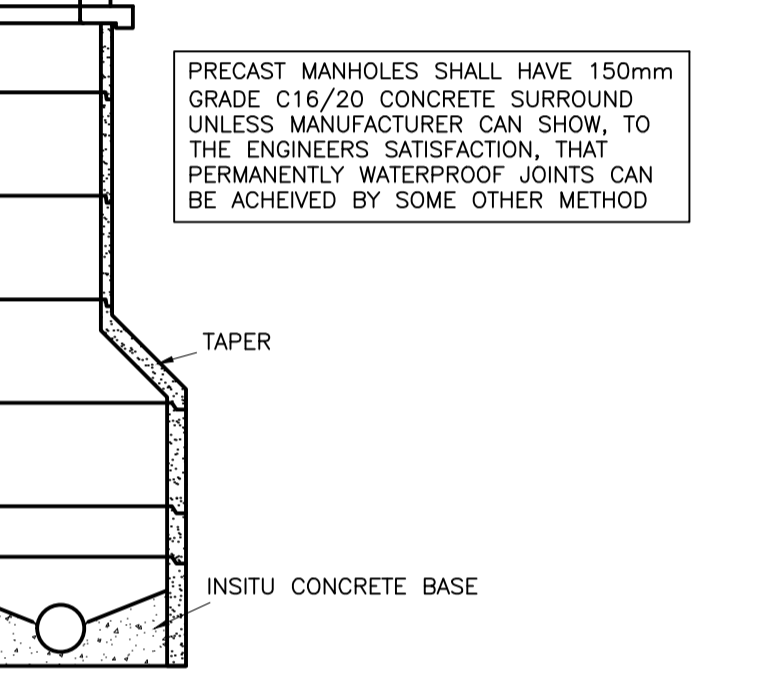
NO PART OF THIS DRAWING MAY BE REPRODUCED OR TRANSMITTED IN ANY FORM OR STORED IN ANY RETRIEVAL SYSTEM OF ANY NATURE WITHOUT THE WRITTEN PERMISSION OF MALONE O'REGAN CONSULTING ENGINEERS AS COPYRIGHT HOLDER EXCEPT AS AGREED FOR USE ON THE PROJECT FOR WHICH THE DRAWING WAS ORIGINALLY ISSUED.

A. THIS DRAWING SHALL BE READ IN CONJUNCTION WITH ALL RELEVANT ENGINEERS, ARCHITECTS AND SPECIALISTS DRAWINGS.
B. ALL DIMENSIONS IN mm UNLESS NOTED.
C. DO NOT SCALE DIMENSIONS.
D. THE CONTRACTOR SHALL CHECK ALL DIMENSIONS PRIOR TO COMMENCEMENT OF CONSTRUCTION. DISCREPANCIES SHALL BE REPORTED TO THIS OFFICE IN WRITING.

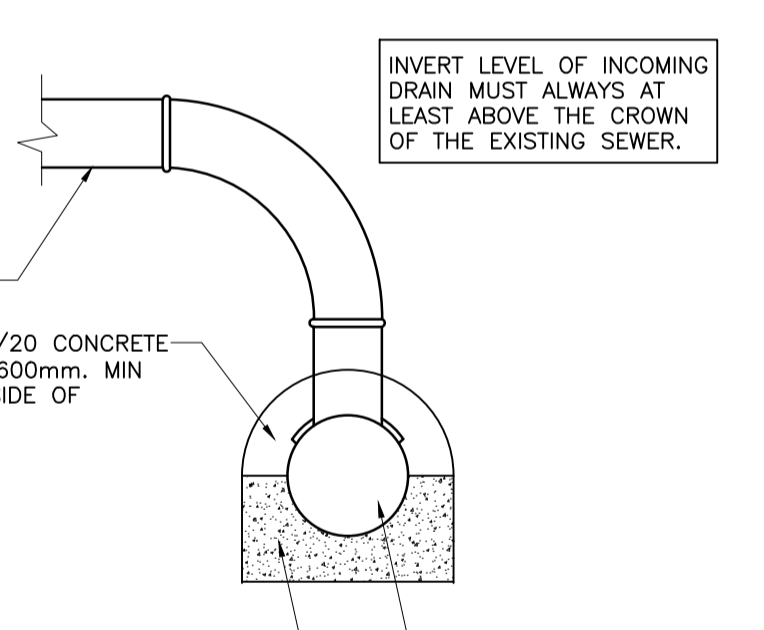
LOCAL AUTHORITY / COUNTY COUNCIL GUIDELINES FOR THE DESIGN AND CONSTRUCTION OF HOUSING MANUAL TO TAKE PRECEDENCE WHERE ANY CONFLICT OCCURS. GREATER DUBLIN REGIONAL CODE OF PRACTICE TO TAKE PRECEDENCE WHERE ANY CONFLICT OCCURS.

ALL EXCAVATIONS/FORMATIONS TO BE SUBJECT TO PLATE TESTS AT LOCATIONS TO BE AGREED ON SITE

Rebuilding Ireland
Action Plan for Housing and Homelessness



PRECAST CONCRETE MANHOLE



TYPICAL SADDLE CONNECTION
SCALE 1:20

PLANNING
21/09/2020

REV	DESCRIPTION	DATE	DRWN BY	CHKD BY
P	ISSUED FOR PLANNING	21.09.20	KD	ROD

ADR MALONE O'REGAN CONSULTING ENGINEERS

2B Richview Office Park, Clonskeagh, DUBLIN 14.
Tel: +353 1 260 2655
Fax: +353 1 260 2660
Email: info@morco.ie

St. Catherine's House, Catherine Street WATERFORD
Tel: +353 51 876 855
Fax: +353 51 876 828
Email: info@waterford.morco.ie

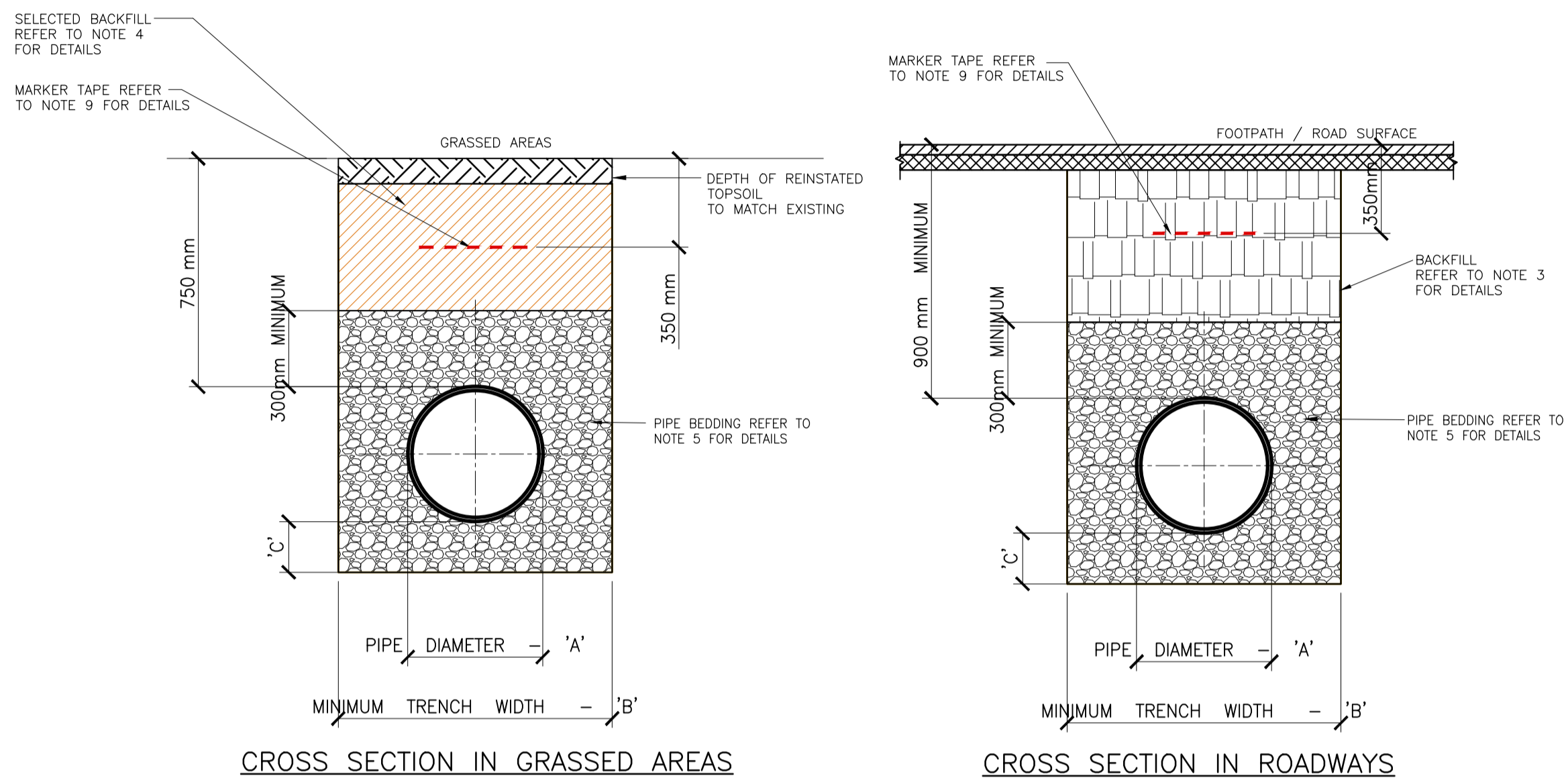
CLIENT NAME		DRAWING NAME	
OFFALY COUNTY COUNCIL		SITE DEVELOPMENT DETAILS SHEET 1	
JOB NAME		JOB NUMBER	
HOUSING DEVELOPMENT EDENDERRY, CO. OFFALY		19055	
DRAWING NUMBER	REVISION	SHEET SIZE	SCALE
EDE-120	P	A1	SHOWN
DATE	DATE	DATE	DATE
SEPT'20	SEPT'20	SEPT'20	SEPT'20
DATE	DATE	DATE	DATE
SEPT'20	SEPT'20	SEPT'20	SEPT'20

- ALL DIMENSIONS IN MILLIMETRES (MM) UNLESS NOTED OTHERWISE.
- THE MINIMUM DEPTH OF COVER FROM THE FINISHED SURFACE TO SHOULD BE PROTECTION WITHOUT THE CROWN OF GRAVITY PIPES AS FOLLOWS:
 - DOMESTIC GARDENS AND PATHWAYS WITHOUT ANY POSSIBILITY OF VEHICULAR ACCESS - DEPTH NOT LESS THAN 0.5 M. (THIS WOULD NORMALLY RELATE TO DRAINS IN PRIVATE PROPERTY, SHALLOW PIPES OF THIS NATURE ARE UNDESIRABLE AND SHOULD BE INSTALLED IN ACCORDANCE WITH THE CURRENT BUILDING REGULATIONS).
 - DOMESTIC DRIVEWAYS, PARKING AREAS AND YARDS WITH HEIGHT RESTRICTIONS TO PREVENT ENTRY BY VEHICLES WITH A GROSS VEHICLE WEIGHT IN EXCESS OF 7.5 TONNES - DEPTH NOT LESS THAN 0.75 M.
 - DOMESTIC DRIVEWAYS, PARKING AREAS AND NARROW STREETS WITHOUT FOOTWAYS (E.G. MEWS DEVELOPMENTS) WITH LIMITED ACCESS FOR VEHICLES WITH A GROSS VEHICLE WEIGHT IN EXCESS OF 7.5 TONNES - DEPTH NOT LESS THAN 0.9 M. D) DEPTHS OF SEWERS IN GATED ESTATES SHALL BE SIMILAR TO THAT OUTLINED ABOVE. E) AGRICULTURAL LAND AND PUBLIC OPEN SPACE - DEPTH NOT LESS THAN 0.9 M. F) OTHER HIGHWAYS AND PARKING AREAS WITH UNRESTRICTED ACCESS TO VEHICLES WITH A GROSS VEHICLE WEIGHT IN EXCESS OF 7.5 TONNES - DEPTH NOT LESS THAN 1.2 M.
- CLAUSE 804 MATERIAL IN ACCORDANCE WITH THE NATIONAL ROADS AUTHORITY SPECIFICATION FOR ROAD WORKS IS TO BE USED AS BACKFILL MATERIAL WHERE THE SEWER MAIN IS LOCATED IN ROADS, FOOTPATHS OR WHEN THE NEAREST PART OF THE TRENCH IS WITHIN 1M OF THE PAVED EDGE OF THE ROADWAY. CLAUSE 804 IS TO BE COMPACTED AS PER CLAUSE 802 OF THE NATIONAL ROADS AUTHORITY SPECIFICATION FOR ROAD WORKS.
- SELECTED EXCAVATED MATERIAL MAY BE USED IN GREEN-FIELD AREAS ABOVE GRANULAR PIPE SURROUND MATERIAL SUBJECT TO THE APPROVAL OF IRISH WATER.
- PIPE BEDDING SHALL COMPLY WITH WIS 4-08-02 AND IGN 4-08-01 GRANULAR MATERIAL SHALL BE 14MM TO 5MM GRADED AGGREGATE OR 10MM SINGLE SIZED AGGREGATE.
- IN SOFT GROUND CONDITIONS (CBR < 5) THE MATERIAL SHOULD BE EXCAVATED AND DISPOSED OF IN ACCORDANCE WITH THE WASTE MANAGEMENT ACT AND CLAUSE 804 MATERIAL IN ACCORDANCE WITH THE NATIONAL ROADS AUTHORITY SPECIFICATION FOR ROAD WORKS SHALL REPLACE THE EXCAVATED MATERIAL, WRAPPED IN GEO-TEXTILE WRAPPING, ALTERNATIVELY, SPECIAL PIPE SUPPORT ARRANGEMENTS, INCLUDING PILING ETC. MAY BE REQUIRED WHERE THE DEPTH OF SOFT MATERIAL IS EXCESSIVE. SUCH ARRANGEMENTS SHALL BE SUBJECT TO ASSESSMENT BY IRISH WATER BEFORE ADVANCING WITH THE WORK.
- IN GREEN FIELD AREAS, TYPE B BACKFILL (SELECTED EXCAVATED MATERIAL) WILL BE ALLOWED ABOVE THE SIDE HAUNCH GRANULAR MATERIAL. IN THE CASE OF RIGID PIPES, A GRANULAR SURROUND OF A MINIMUM DEPTH OF 150MM ABOVE THE CROWN OF THE PIPE IS REQUIRED FOR FLEXIBLE PIPES. AND TYPE B MATERIAL MAY BE USED AS BACKFILL ABOVE THIS. ALL RISING MAINS IN GREENFIELD AREAS SHALL HAVE A MINIMUM COVER OF 300MM OF GRANULAR MATERIAL ABOVE THE EXTERNAL CROWN OF THE PIPE.
- PIPES SHALL NOT BE SUPPORTED ON STONES OR ROCKS, OR ANY HARD OBJECT AT ANY POINT ALONG THE TRENCH. ROCK SHALL BE EXCAVATED TO A DEPTH OF 150MM BELOW THE ACTUAL DEPTH OF THE TRENCH WITH THE VOID FILLED WITH CLAUSE 804 MATERIAL. IN ACCORDANCE WITH THE NATIONAL ROADS AUTHORITY SPECIFICATION FOR ROAD WORKS, THE GRANULAR MATERIAL SHALL BE LAID ABOVE THIS VOID BACKFILL MATERIAL.
- NON DEGRADABLE MARKER TAPE SHOULD BE INSTALLED 350MM FROM THE SURFACE OF THE ROAD. IN THE CASE OF NON METAL PIPE MATERIAL, THE MARKER TAPE SHOULD INCORPORATE A TRACE WIRE WHICH IS LINKED TO FITTINGS AND TERMINATED AT THE WASTE WATER PUMPING STATION AND THE DISCHARGE MANHOLE.

NO PART OF THIS DRAWING MAY BE REPRODUCED OR TRANSMITTED IN ANY FORM OR STORED IN ANY RETRIEVAL SYSTEM OF ANY NATURE WITHOUT THE WRITTEN PERMISSION OF MALONE O'REGAN CONSULTING ENGINEERS AS COPYRIGHT HOLDER EXCEPT AS AGREED FOR USE ON THE PROJECT FOR WHICH THE DRAWING WAS ORIGINALLY ISSUED.

A. THIS DRAWING SHALL BE READ IN CONJUNCTION WITH ALL RELEVANT ENGINEERS, ARCHITECTS AND SPECIALISTS DRAWINGS.
 B. ALL DIMENSIONS IN mm UNLESS NOTED.
 C. DO NOT SCALE DIMENSIONS.
 D. THE CONTRACTOR SHALL CHECK ALL DIMENSIONS PRIOR TO COMMENCEMENT OF CONSTRUCTION. DISCREPANCIES SHALL BE REPORTED TO THIS OFFICE IN WRITING.

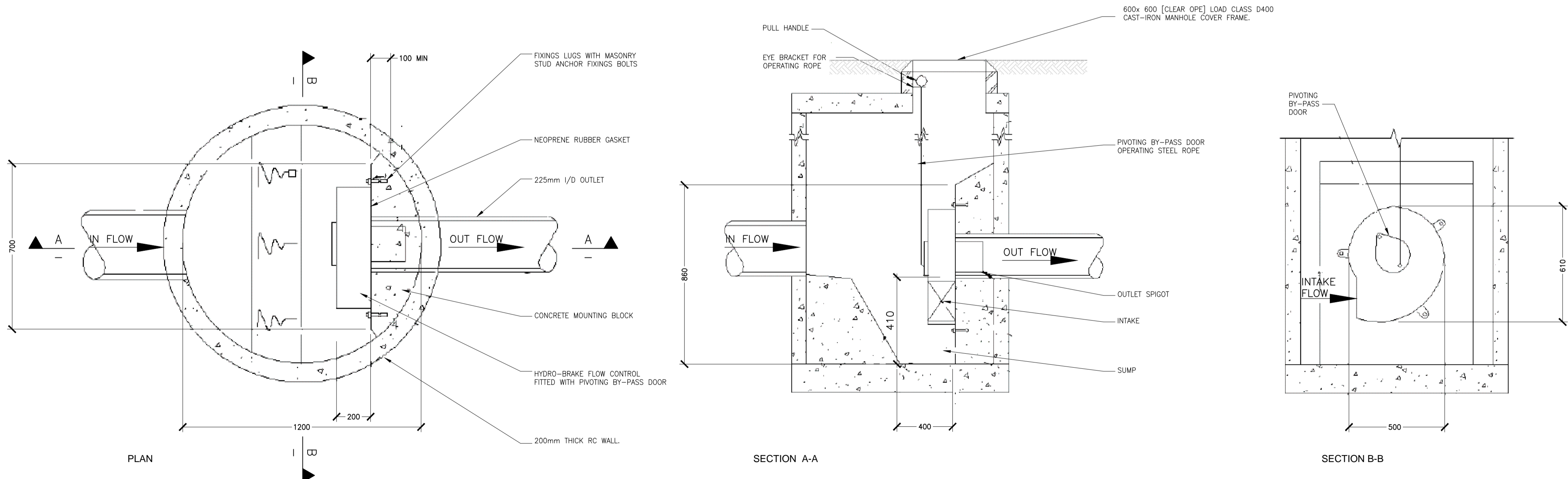
LOCAL AUTHORITY / COUNTY COUNCIL GUIDELINES FOR THE DESIGN AND CONSTRUCTION OF HOUSING MANUAL TO TAKE PRECEDENCE WHERE ANY CONFLICT OCCURS. GREATER DUBLIN REGIONAL CODE OF PRACTICE TO TAKE PRECEDENCE WHERE ANY CONFLICT OCCURS.



PIPE DIAMETER 'A' (mm)	TRENCH WIDTH 'B' (mm)
< 80	500
100	500
150	600
200	600
250	750
300	750
350	750
400	900
450	900

PIPE DIAMETER 'A' (mm)	DEPTH OF BEDDING 'C' (mm)
< 200	150
> 250	200

DRAINAGE BEDDING DETAILS



SMH HYDRO BRAKE FLOW CONTROL

PLANNING
21/09/2020

REV	DESCRIPTION	DATE	DRWN BY	CHKD BY
P	ISSUED FOR PLANNING	21.09.20	KD	ROD

MOR
MALONE O'REGAN
CONSULTING ENGINEERS

2B Richview Office Park,
Clonskeagh,
DUBLIN 14.
Tel: +353 1 260 2655
Fax: +353 1 260 2660
Email: info@mor.ie

St. Catherine's House,
Catherine Street
WATERFORD
Tel: +353 51 876 855
Fax: +353 51 876 828
Email: info@waterford.mor.ie

CLIENT NAME OFFALY COUNTY COUNCIL	DRAWING NAME SITE DEVELOPMENT DETAILS SHEET 2
JOB NAME HOUSING DEVELOPMENT EDENDERRY, CO. OFFALY	
JOB NUMBER 19055	DRAWING NUMBER EDE-121
REVISION P	SHEET SIZE A1
SCALE SHOWN	DATE SEPT'20
DRAWN BY KD	ENGINEER ROD